

MPI Corporation 6223.TT

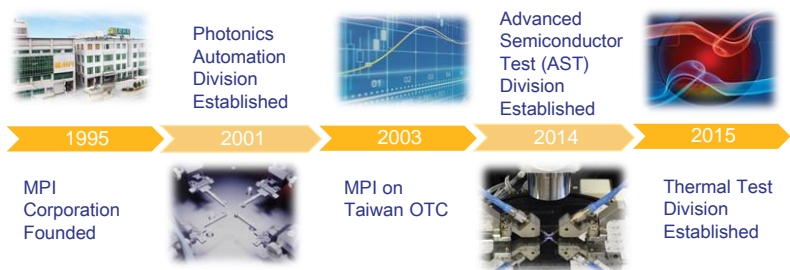
BNP Paribas 8th Asia Pacific TMT Conference
22-23th May 2017

READY FOR THE TEST™

Presentation Disclaimer

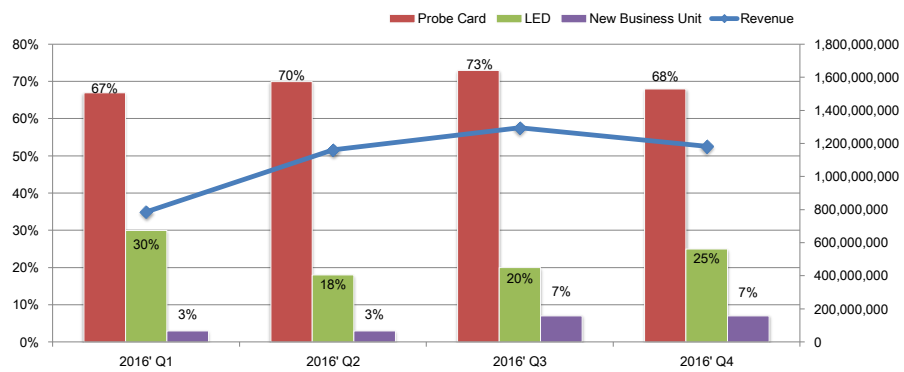
The information herein contains forward-looking statements. We have based these forward-looking statements on our current expectations and projections about future events. Although we believe that these expectations and projections are reasonable, such forward-looking statements are inherently subject to risks, uncertainties and assumptions about us, including, among other things: the intensely competitive Semi-conductor, and LED industries and markets; Cyclical nature of the semiconductor industry; Risks associated with global business activities; General economic and political conditions. All financial figures discussed herein are prepared pursuant to IFRS. All audited figures will be publicly announced upon the completion of our audited process.

Company at a Glance

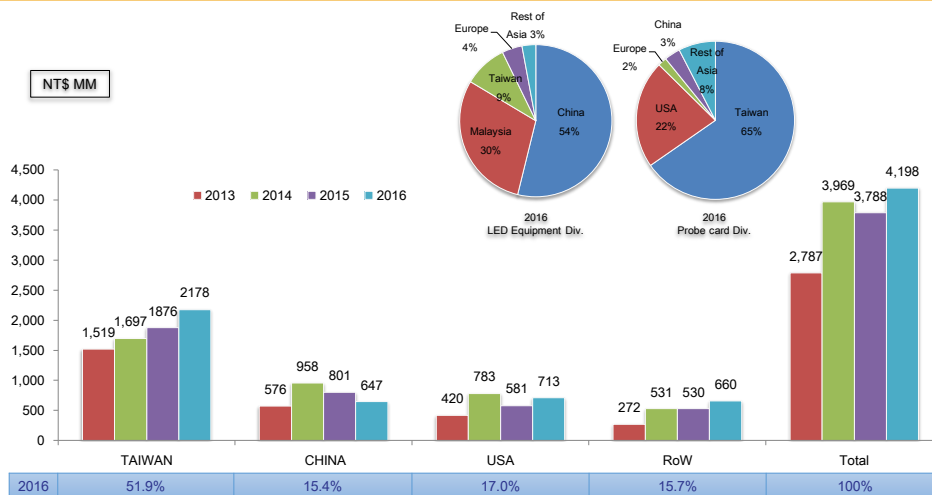


Founded	July, 25, 1995
Paid-in Capital	NTD\$ 798M (2017.4.30-the latest)
Employees	1466 (2017.4.30)

Business Portfolio



Net Sales by Geographic



Agenda

■ Business Contents

- Semi-conductor (Probe Card)
- Photonics Automation (LED)
- Thermal & AST

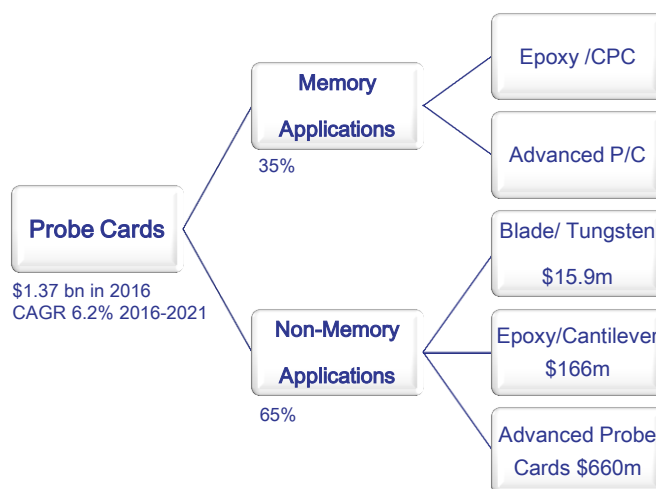
■ Financial Statements

Semi-conductor (Probe Card)

BNP Paribas 8th Asia Pacific TMT Conference
22-23th May 2017

READY FOR THE TEST™

Global Probe Card Market Update

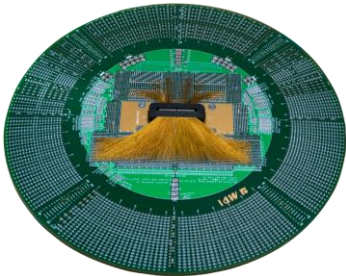


Top 10 Probe Card Vendors (2011-2016)

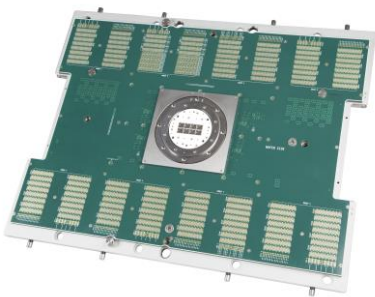
(Rank)		2011	2012	2013	2014	2015	2016
FormFactor, Inc.	USA	2	2	1	1	1	1
Micronics Japan Co., Ltd.	Japan	1	1	2	2	2	2
Technoprobe	Italy	5	5	3	3	3	3
Japan Electronic Materials	Japan	3	3	4	4	4	4
MPI Corporation	Taiwan	8	7	5	5	5	5
SV TCL	Singapore	10	11	10	9	7	6
Microfriend	Korea	12	18	7	8	10	7
Korea Instrument	Korea	6	8	9	6	9	8
Cascade Microtech	USA	13	9	8	7	6	9
FEINMETALL	Germany	14	12	11	11	11	10

CPC & VPC

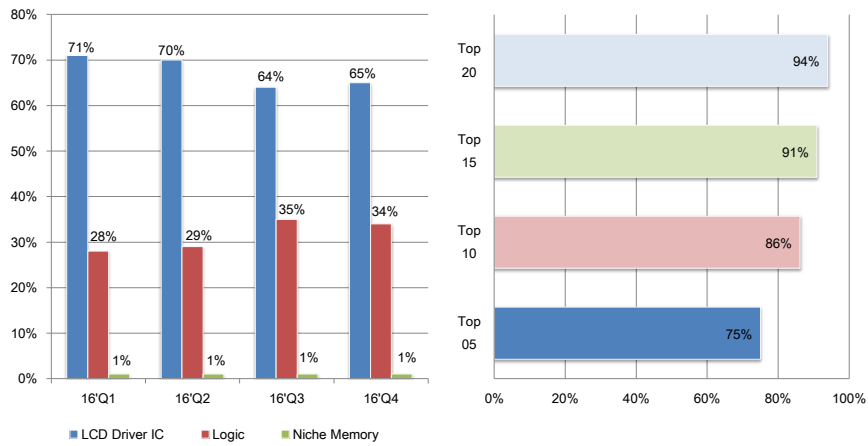
CPC



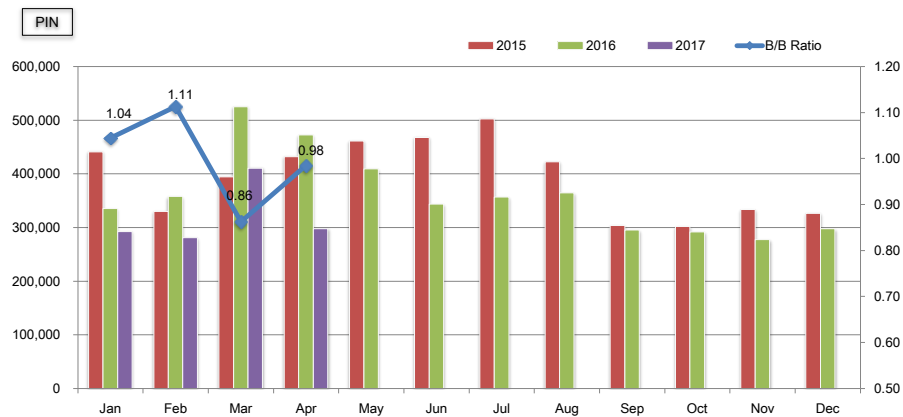
VPC



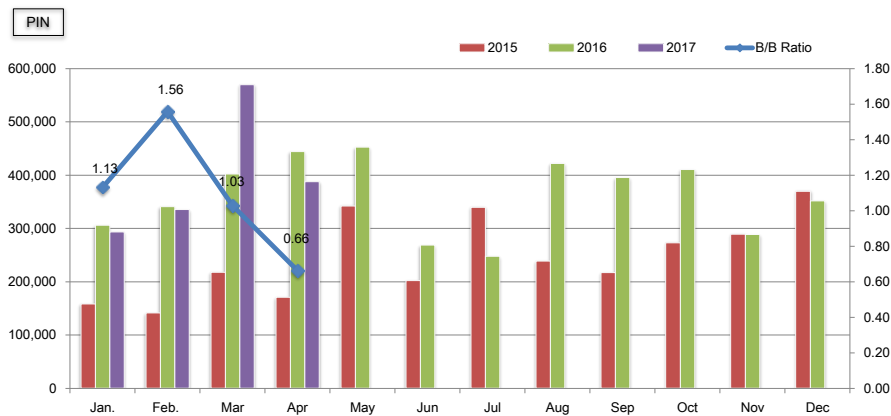
Product Mix of CPC (Cantilever)



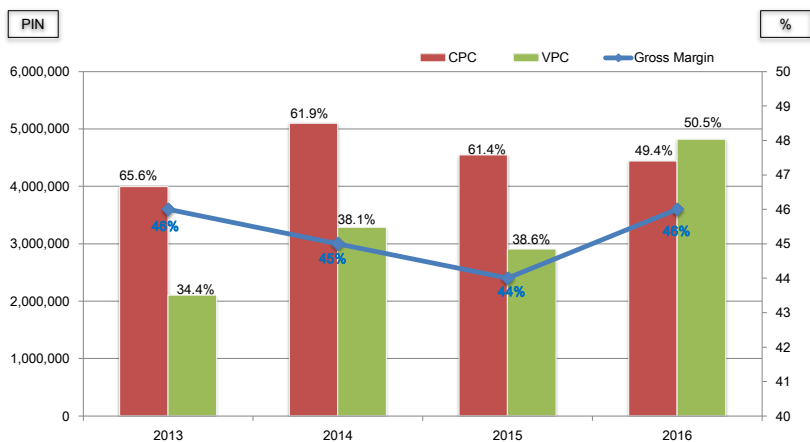
CPC Pin-Shipment



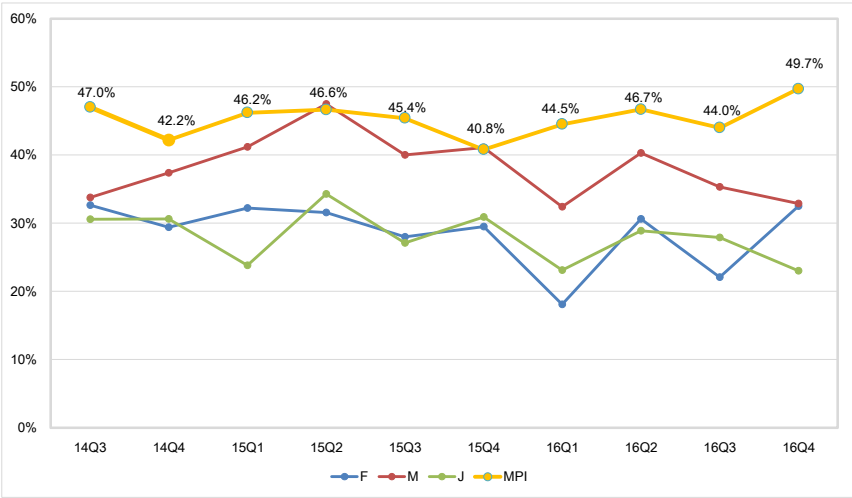
VPC Pin-Shipment



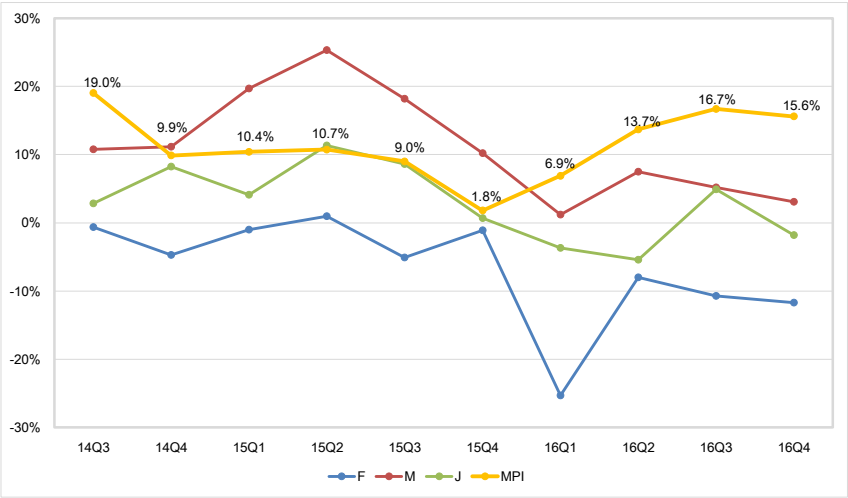
CPC and VPC Yearly Status



Gross Margin Between Global Peers



Operating Margin Between Global Peers



Photonics Automation (LED)

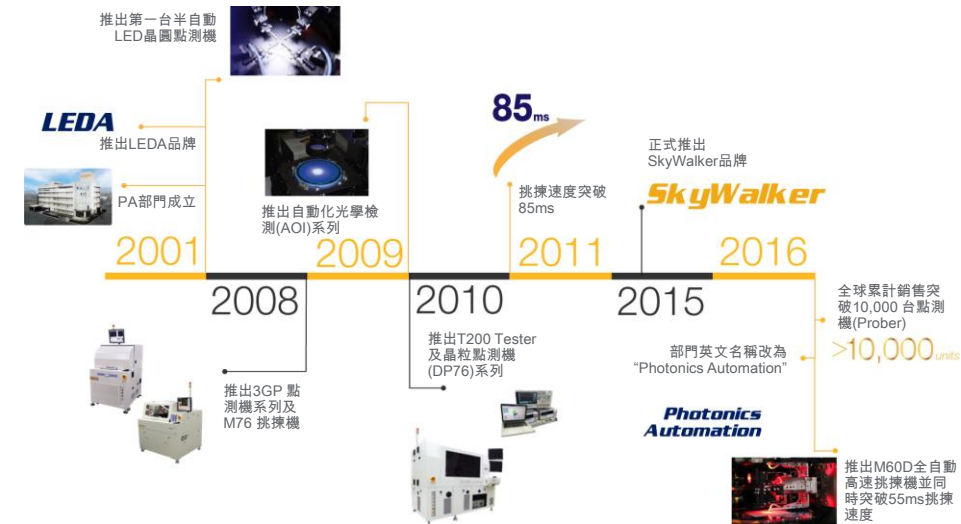
BNP Paribas 8th Asia Pacific TMT Conference
22-23th May 2017

READY FOR THE TEST™

Photonics Automation (PA) Overview



Milestone

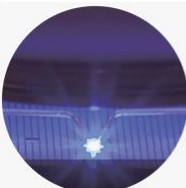

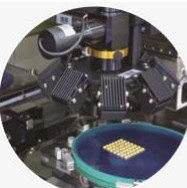
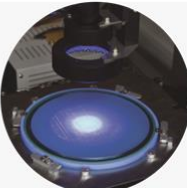



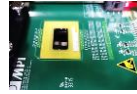
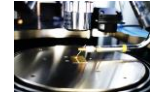
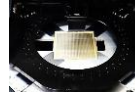


MPI CORPORATION

READY FOR THE TEST™

19

Main Product Line

 <p>Probing System Wafer Flip chip Single die</p> <p>Package Probing Panel Bottom probing Single package</p>	 <p>Testing System Mass production software Integrated spectrum meter Integrated source meter</p> <p>Package Testing From low to high power</p>	 <p>Chip Sorting Mapping sorter</p> <p>Package Level Chip Scale Package (CSP) Foil to Foil (FTF)</p>	 <p>Inspection System Chip after dicing Chip after sorting</p>		
 <p>Wafer</p>	 <p>Tape</p>	 <p>Die</p>	 <p>Packaging Substrate</p>	 <p>Photodiode(PD)</p>	 <p>LED Package Probing</p>

MPI CORPORATION

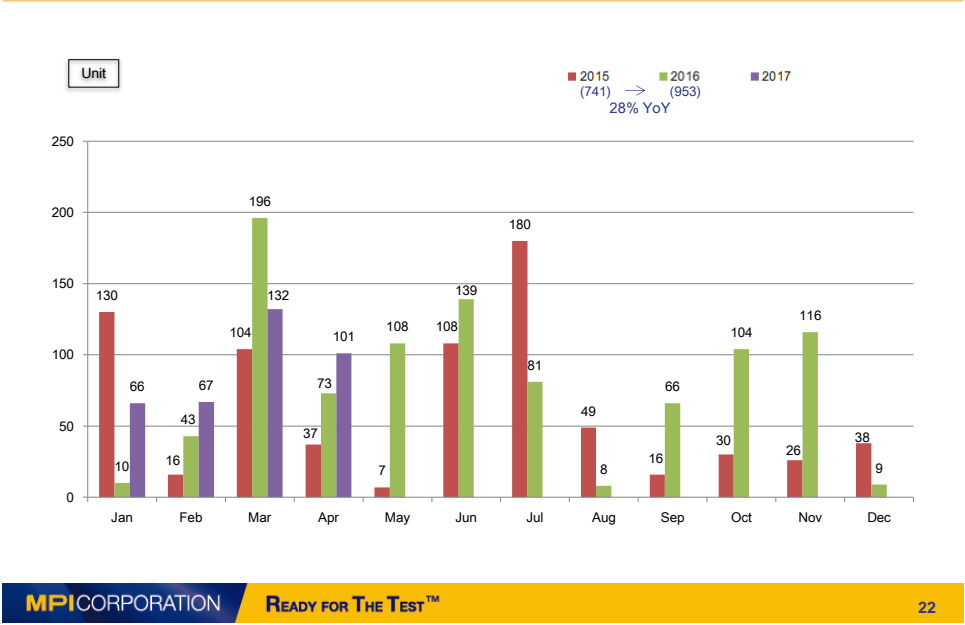
READY FOR THE TEST™

20

Wafer Technology Migration



2017 Shipment



LED 2017 Targeting Markets



Automotive

Night Vision, Reverse Radar to
Panorama View for Autopilot
System
IR LED



Eye Scanning for E-wallet

IR LED (Fujitsu and Samsung)



VR (2016 Market size 14m USD)

IR LED
Inside-out Tracking : HTC Vive
Outside-in Tracking : Oculus Rift (Facebook)
More Manufacturers: Tencent, Nintendo,
Microsoft and Dell

New Business Unit (Thermal/AST)

BNP Paribas 8th Asia Pacific TMT Conference
22-23th May 2017

Thermal

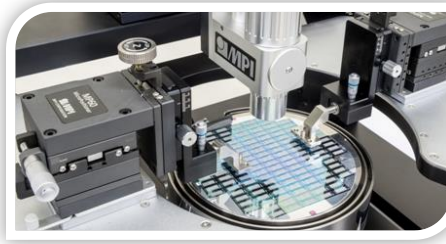


- **Market size:** roughly USD\$30m
- **Industries:** Telecom / Automotive

<http://www.mpi-thermal.com/media/>

AST

- **Market size:** roughly USD\$120m
- **Industry:** Foundry/IC design houses' engineering stage process



Financial Statements

BNP Paribas 8th Asia Pacific TMT Conference
22-23th May 2017

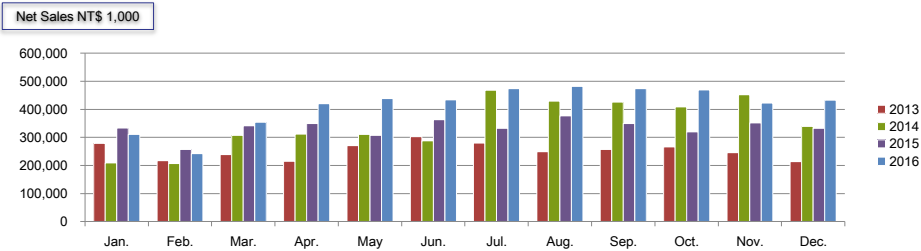
READY FOR THE TEST™

Balance Sheet Highlight

Amount: NT\$ Million	2016		2015	
Cash and Cash Equivalents	749	10%	473	7%
Fixed Assets	3,602	50%	3,505	53%
Total Assets	7,264	100%	6,651	100%
LT Debt	240	3%	250	4%
Shareholders' Equity	3,959	54%	3,684	54%
EBITDA	651		359	
*EBITDA=operating income + depreciation & amortization expenses				

Income Statement

NT\$1,000	2016		2015	
Net Sales	4,961,755	100%	4,013,170	100%
Cost of Goods Sold	2,665,069	54%	2,220,098	55%
Gross Profit	2,296,686	46%	1,793,072	45%
Operating Expense	1,610,920	32%	1,476,271	37%
Operating Income	685,942	14%	319,840	8%
Investment Income & Others	-34,454		39,674	
Net Income (before tax)	560,837	11%	294,141	7%
EPS (before tax)	7.09		3.71	



MPI CORPORATION

Thank You

<http://www.mpi-corporation.com>

READY FOR THE TEST™