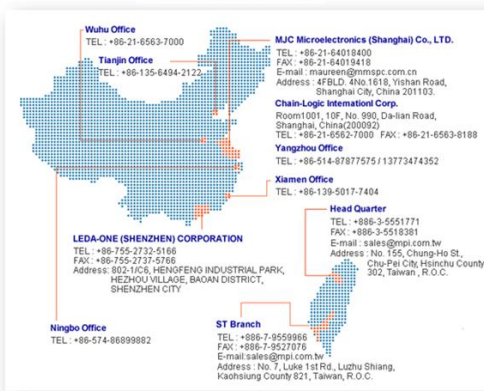


Safe Harbor Notice

The information herein contains forward-looking statements. We have based these forward-looking statements on our current expectations and projections about future events. Although we believe that these expectations and projections are reasonable, such forward-looking statements are inherently subject to risks, uncertainties and assumptions about us, including, among other things: the intensely competitive Semi-conductor, and LED industries and markets; Cyclical nature of the semiconductor industry; Risks associated with global business activities; General economic and political conditions. All financial figures discussed herein are prepared pursuant to IFRS. All audited figures will be publicly announced upon the completion of our audited process.

Company at a Glance

Taiwan and China



Founded July, 25, 1995

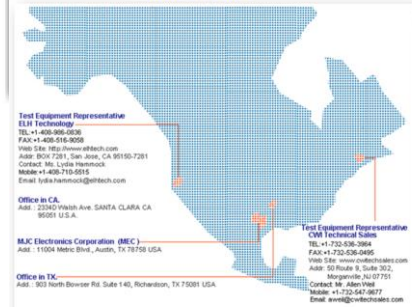
Paid-in Capital NTD\$ 795M (2015.01.31-the latest)

Employees 1220 (2015.01.31)

Europe

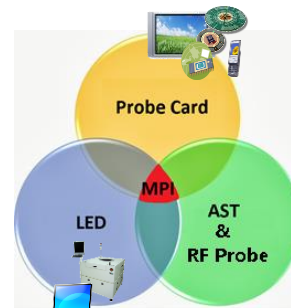
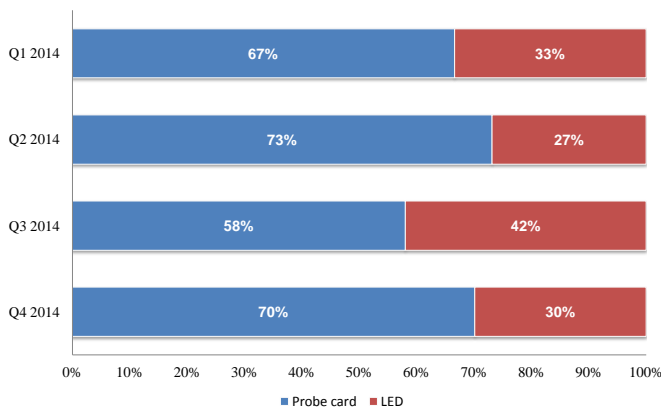


North America



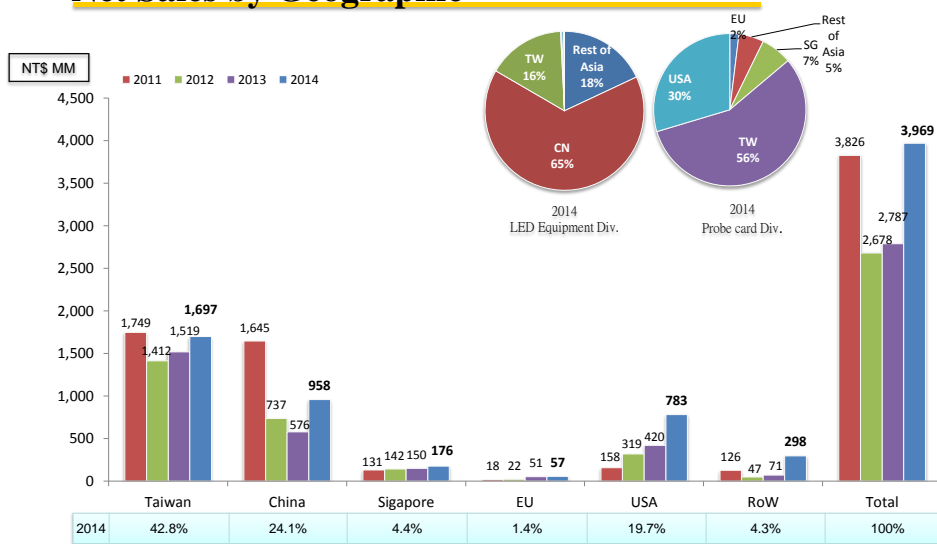
MPI Corporation 3

Business Portfolio



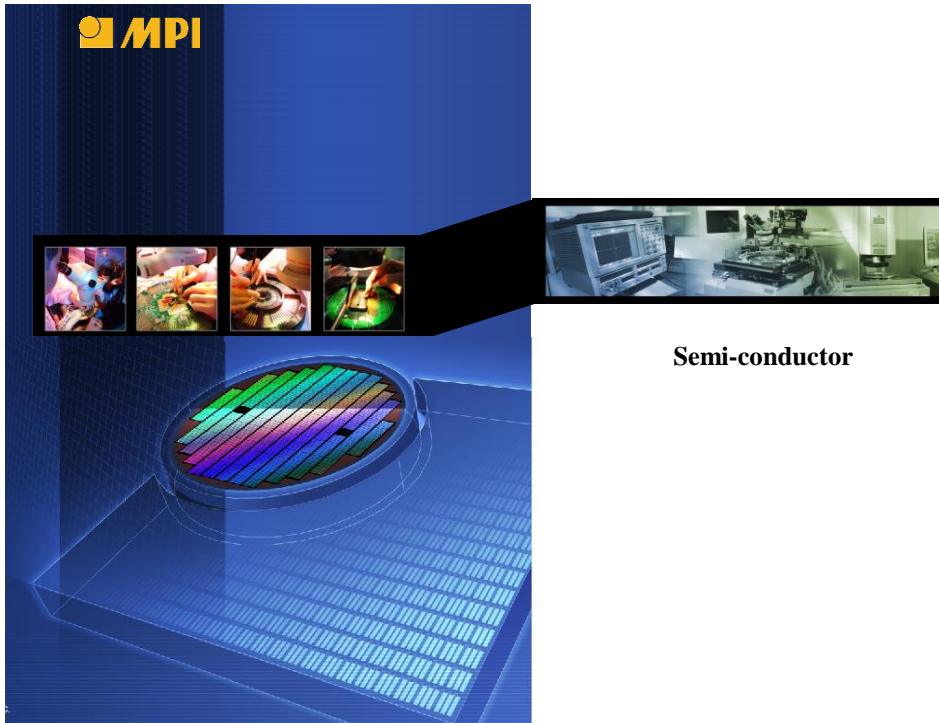
MPI Corporation 4

Net Sales by Geographic

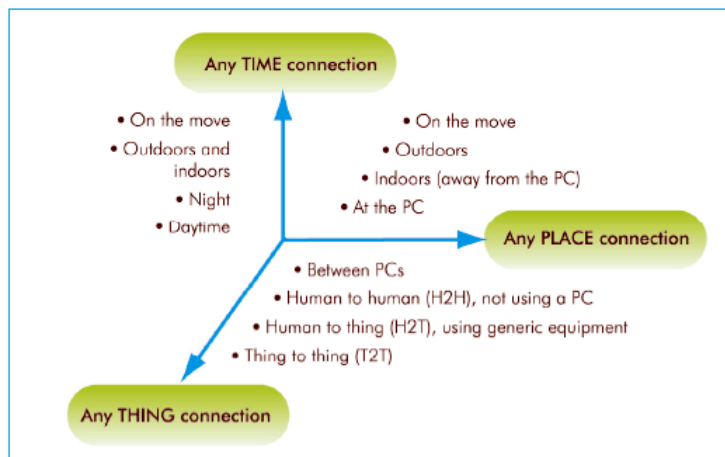


Agenda

- **Business Contents**
 - **Semi-conductor (Probe Card)**
 - **LED**
 - **RF Probe & AST**

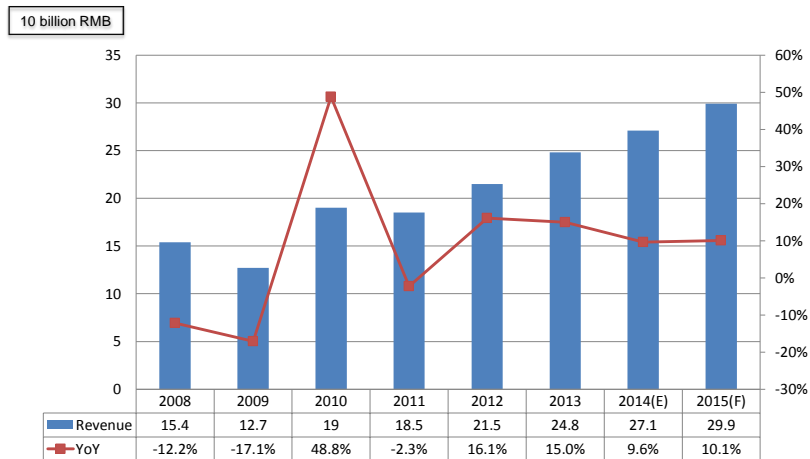


“Internet of things” Is Becoming The Next Growth Driver



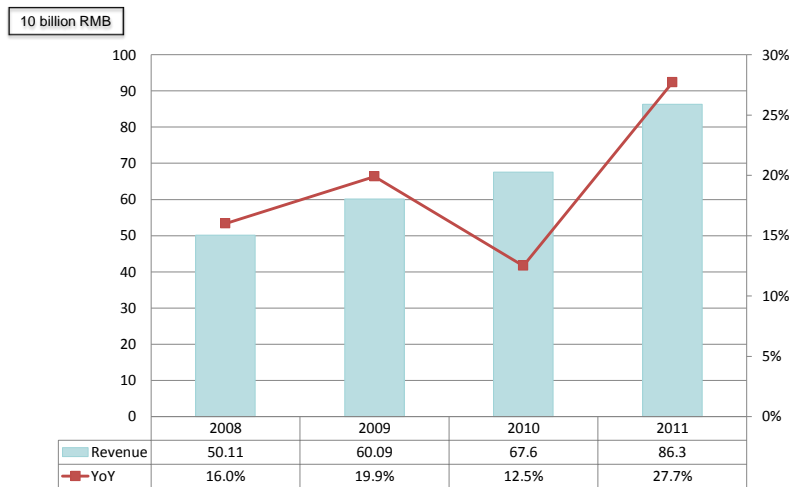
Source: ITU, adapted from Nomura Research Institute.

2008~2015 Revenue of Wafer Foundry in China



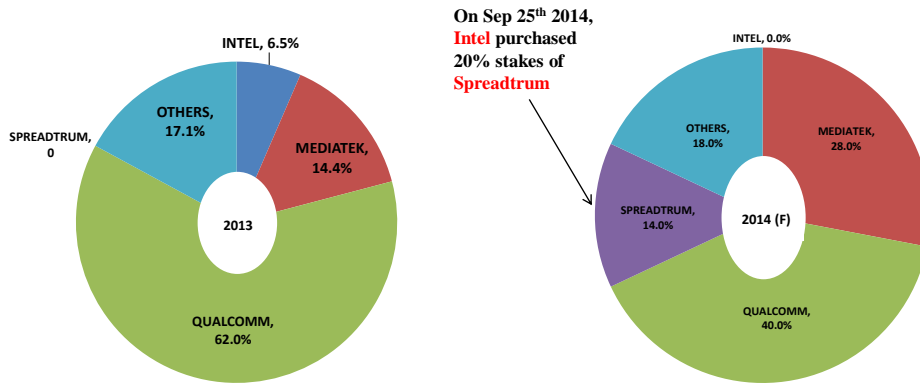
Source: Topology Research Institute, 2014/12

2012~2015 Revenue of IC Manufacturing in China



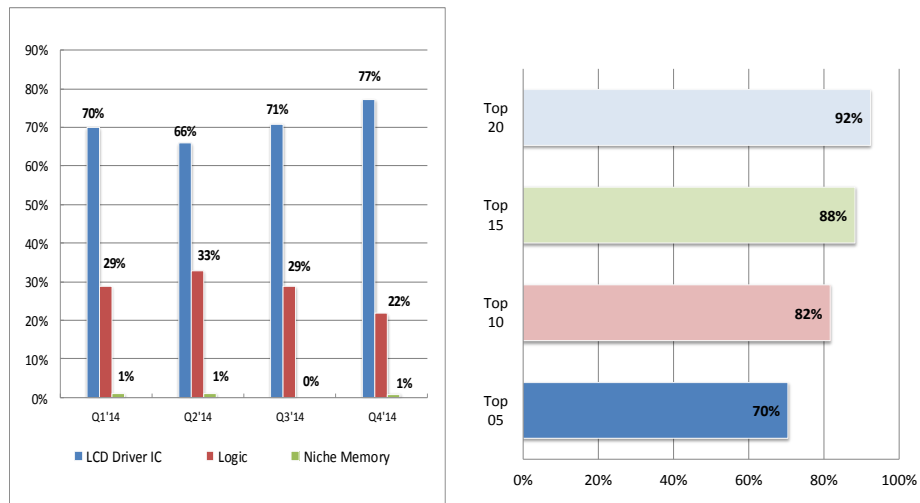
Source: Topology Research Institute, 2014/12

Portable Devices Chip-Makers

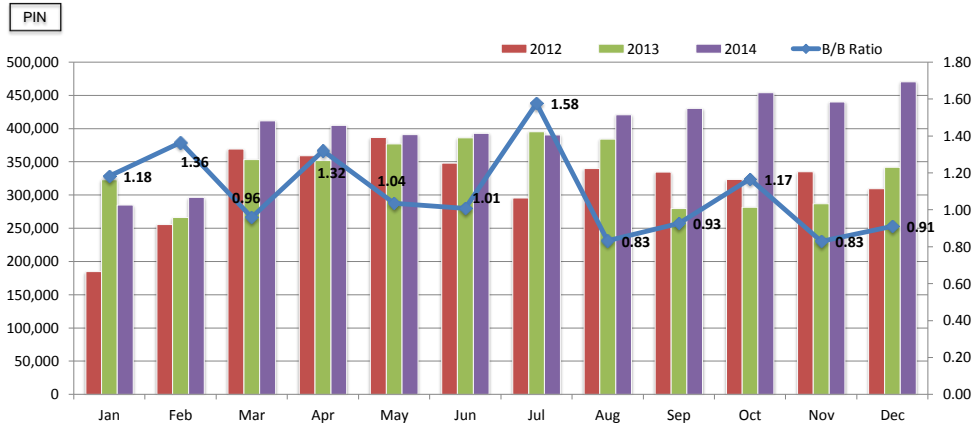


Source: RBC Capital Markets & Economic Times

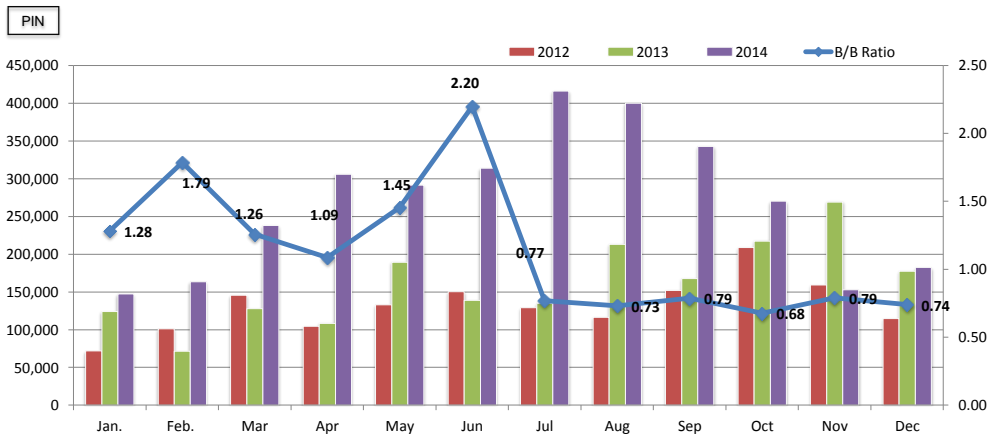
Product Mix of CPC (Cantilever)



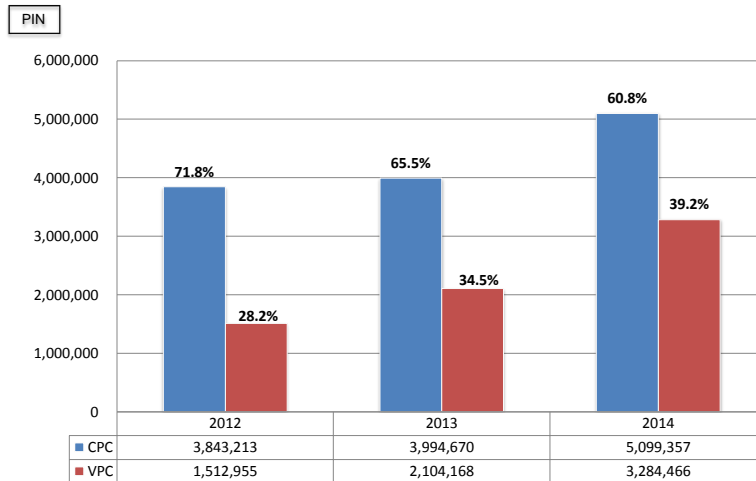
CPC Pin-Shipment



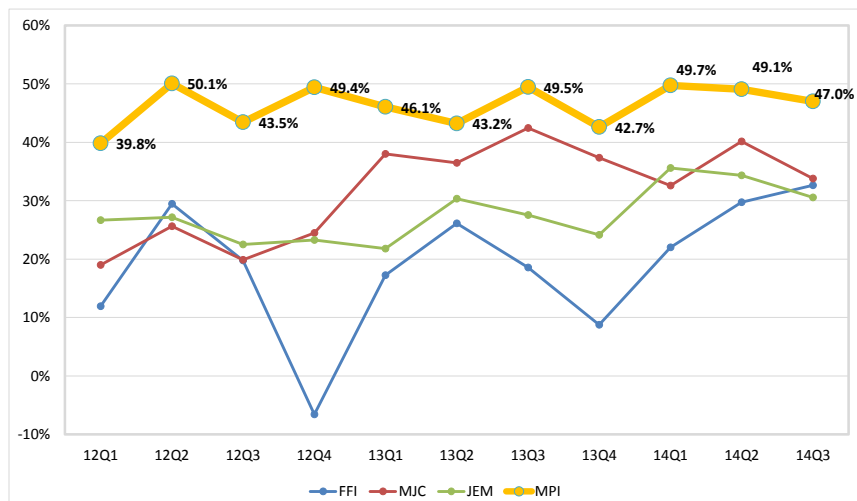
VPC Pin-Shipment



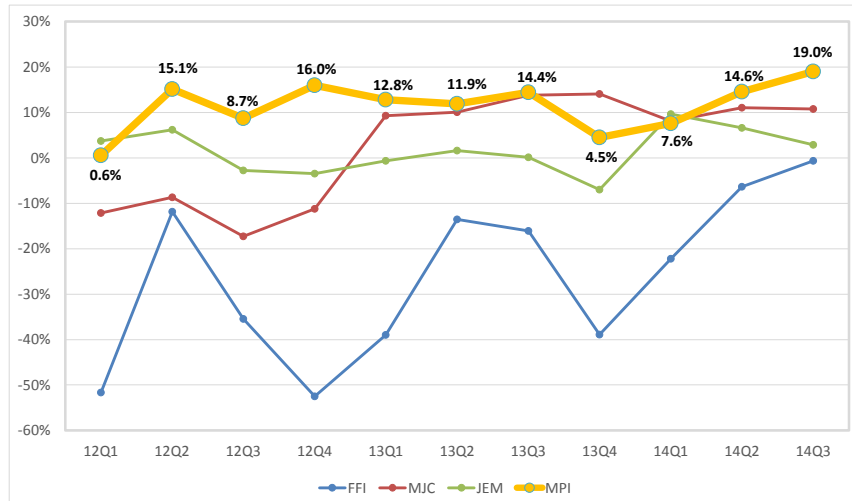
CPC and VPC Yearly Trend 2012 ~2014



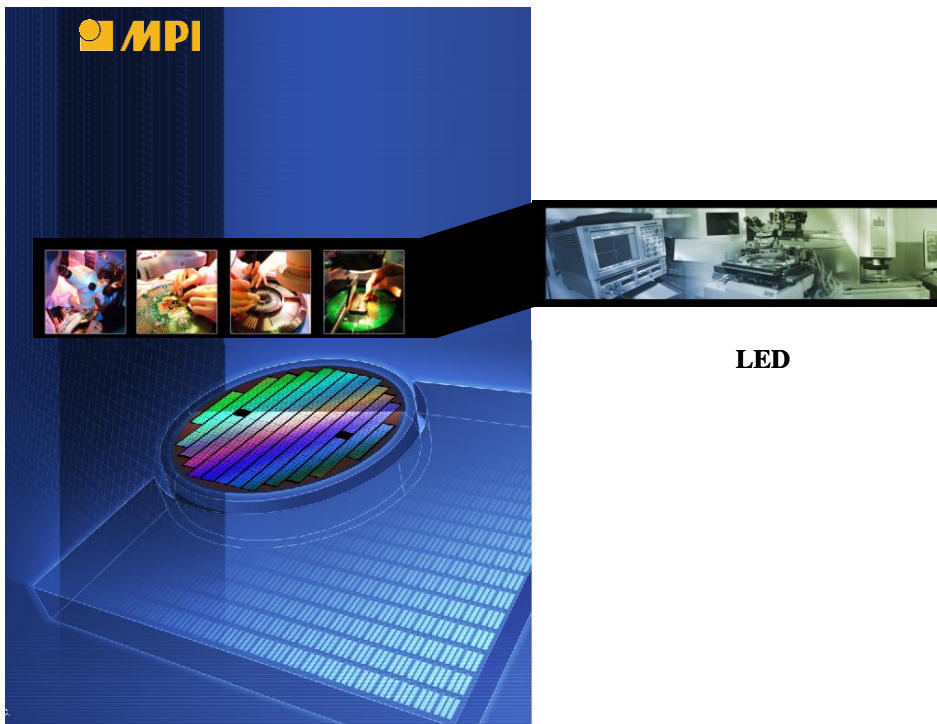
Gross Margin Between Competitors



Operating Margin Between Competitors



MPI Corporation 17



18

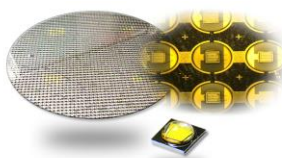
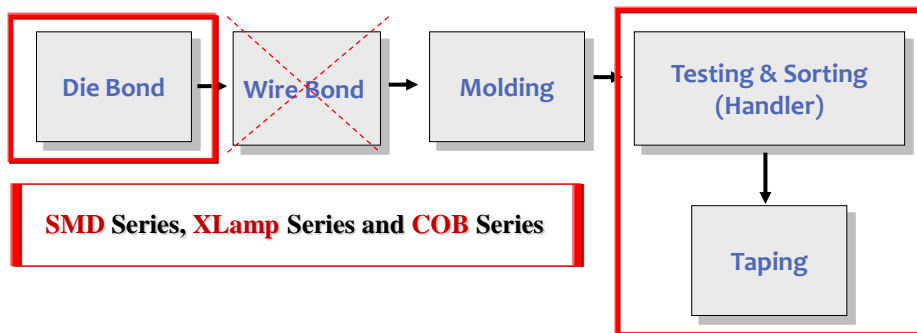
LED Top 10 Chipmakers and Packagers

	Company Name	Headquarter	Market Share %
①.	Epistar + Forepi	Taiwan	14.6%
②.	San'an	China	10.8%
3.	LG Innotek	South Korea	6.8%
4.	Samsung LED	South Korea	6.1%
⑤.	Elec-Tech	China	5%
⑥.	Seoul Opto	South Korea	4.3%
⑦.	Lextar	Taiwan	4.0%
⑧.	Tongfang Opto	China	3.7%
⑨.	Genesis Photonics	Taiwan	3.2%

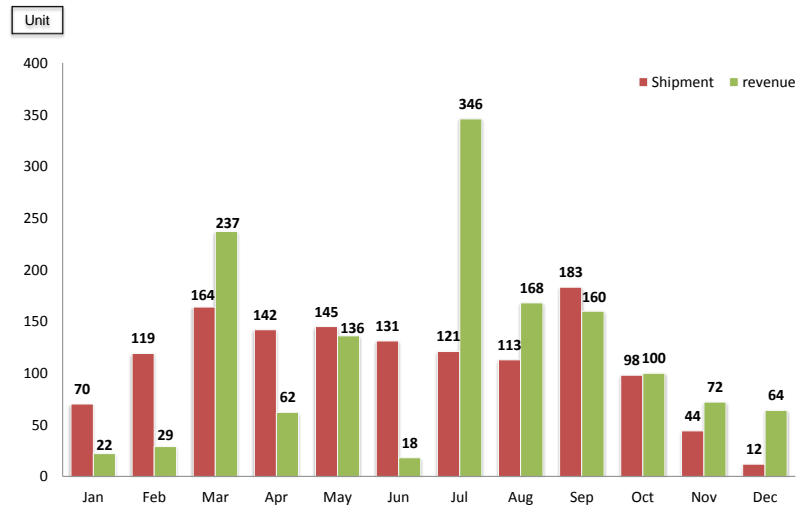
Source: IHS Inc. 2014'Q1

	Company Name	Headquarter
1.	Nichia	Japan
②.	Osram	Germany
3.	Samsung Electronics	South Korea
④.	Seoul Semi	South Korea
5.	Lumileds	USA
⑥.	Cree	USA
7.	LG Innotek	South Korea
⑧.	Everlight	Taiwan
9.	Toyoda Gosei	Japan
10.	MLS	China

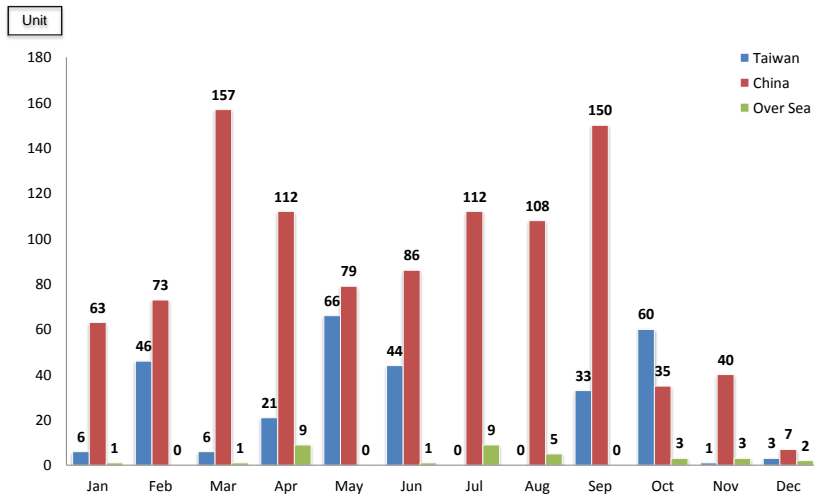
Flip-Chip is Becoming the Next Growth



2014 Shipment Amount



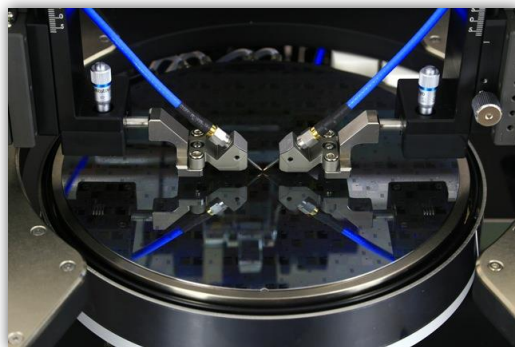
2014 Shipment Amount by Geographic





RF Probe & AST

RF Probe

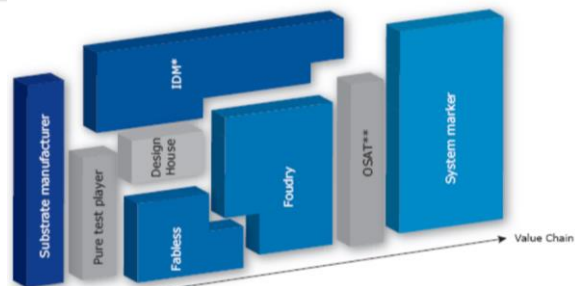


AST



MPI Corporation 25

Who Are Our Target Customers?



*IDM: Integrated Device Manufacturer. **OSAT: Outsourced Semiconductor Assembly and Test

Stand alone Industrial Research facilities	Gov't Labs and institutes	University Research
		University Teaching Labs

**RESEARCH
MARKET**

**EDUCATION
MARKET**

Universities Worldwide

9301 Universities in 205 countries (October 11th, 2014), <http://univ.cc/>

MPI Corporation 26



Thank you!
<http://www.mpi.com.tw/>