

MPI Corporation.

(6223.TT)

Credit Suisse Asian Technology Conference



Safe Harbor Notice

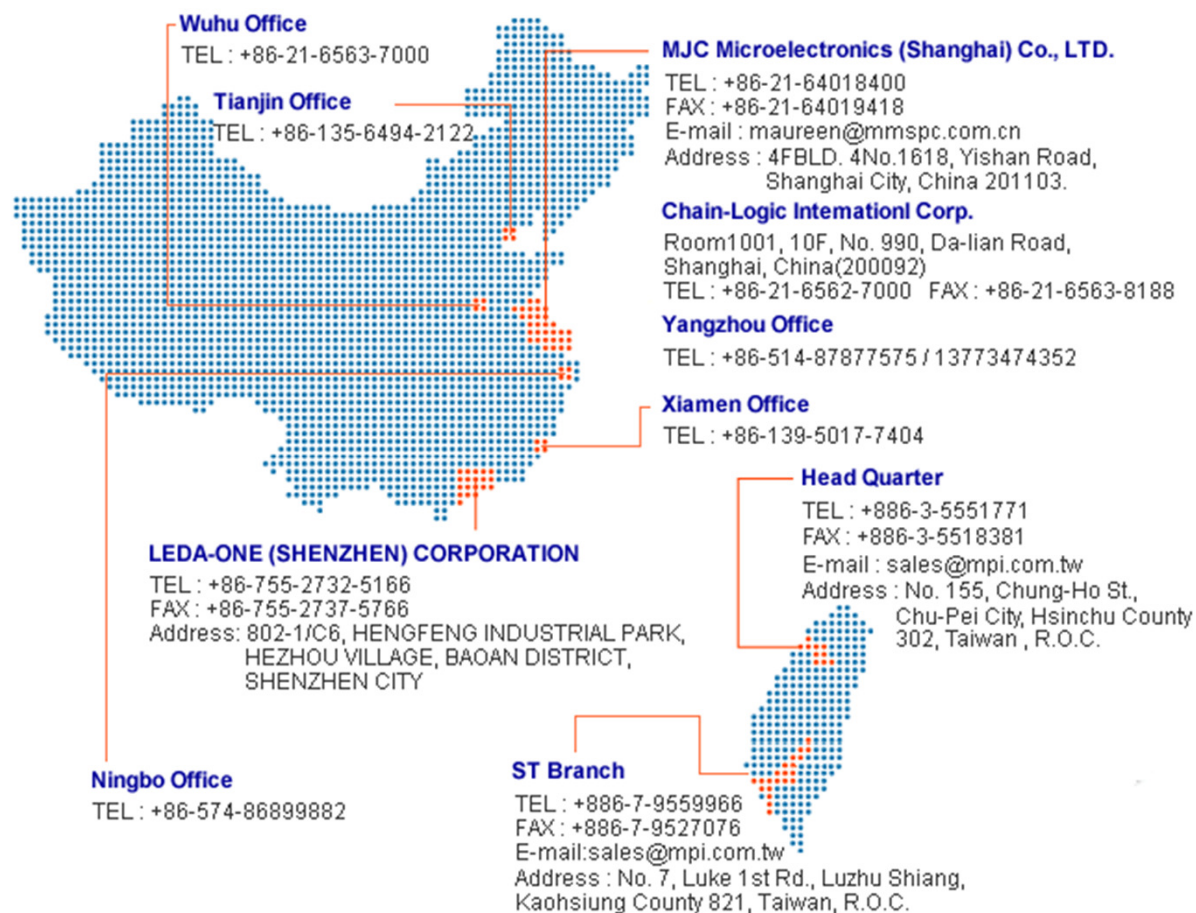
The information herein contains forward-looking statements. We have based these forward-looking statements on our current expectations and projections about future events. Although we believe that these expectations and projections are reasonable, such forward-looking statements are inherently subject to risks, uncertainties and assumptions about us, including, among other things: the intensely competitive Semi-conductor, and LED industries and markets; Cyclical nature of the semiconductor industry; Risks associated with global business activities; General economic and political conditions; Other risks identified in our annual report for the year ended June 30th, 2011. All financial figures discussed herein are prepared pursuant to ROC GAAP on an un-audited unconsolidated basis. All audited figures will be publicly announced upon the completion of our audited process.

Company at a Glance

Founded July, 25, 1995

Paid-in Capital NTD\$ 785.5M
(2011.08.31-the latest)

Employees 849 (2011.08.31)

Wuhu Office
TEL : +86-21-6563-7000

Tianjin Office
TEL : +86-135-6494-2122

MJC Microelectronics (Shanghai) Co., LTD.
TEL : +86-21-64018400
FAX : +86-21-64019418
E-mail : maureen@mmmspc.com.cn
Address : 4FBLD. 4No.1618, Yishan Road,
Shanghai City, China 201103.

Chain-Logic International Corp.
Room1001, 10F, No. 990, Da-lian Road,
Shanghai, China(200092)
TEL : +86-21-6562-7000 FAX : +86-21-6563-8188

Yangzhou Office
TEL : +86-514-87877575 / 13773474352

Xiamen Office
TEL : +86-139-5017-7404

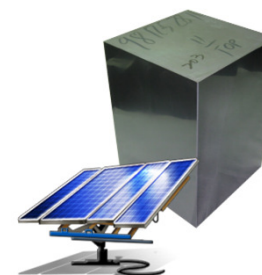
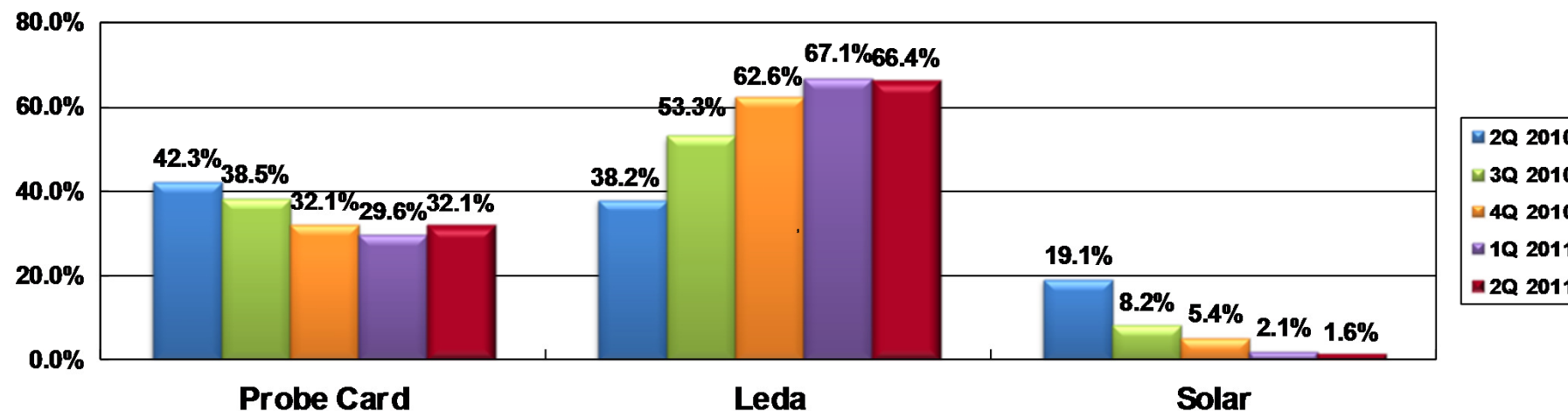
Head Quarter
TEL : +886-3-5551771
FAX : +886-3-5518381
E-mail : sales@mpi.com.tw
Address : No. 155, Chung-Ho St.,
Chu-Pei City, Hsinchu County
302, Taiwan , R.O.C.

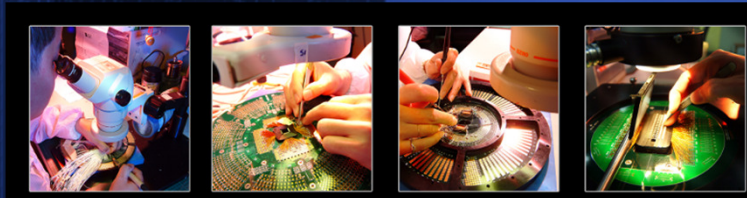
LEDA-ONE (SHENZHEN) CORPORATION
TEL : +86-755-2732-5166
FAX : +86-755-2737-5766
Address: 802-1/C6, HENG FENG INDUSTRIAL PARK,
HEZHOU VILLAGE, BAOAN DISTRICT,
SHENZHEN CITY

Ningbo Office
TEL : +86-574-86899882

ST Branch
TEL : +886-7-9559966
FAX : +886-7-9527076
E-mail:sales@mpi.com.tw
Address : No. 7, Luke 1st Rd., Luzhu Shiang,
Kaohsiung County 821, Taiwan, R.O.C.

Business Portfolio

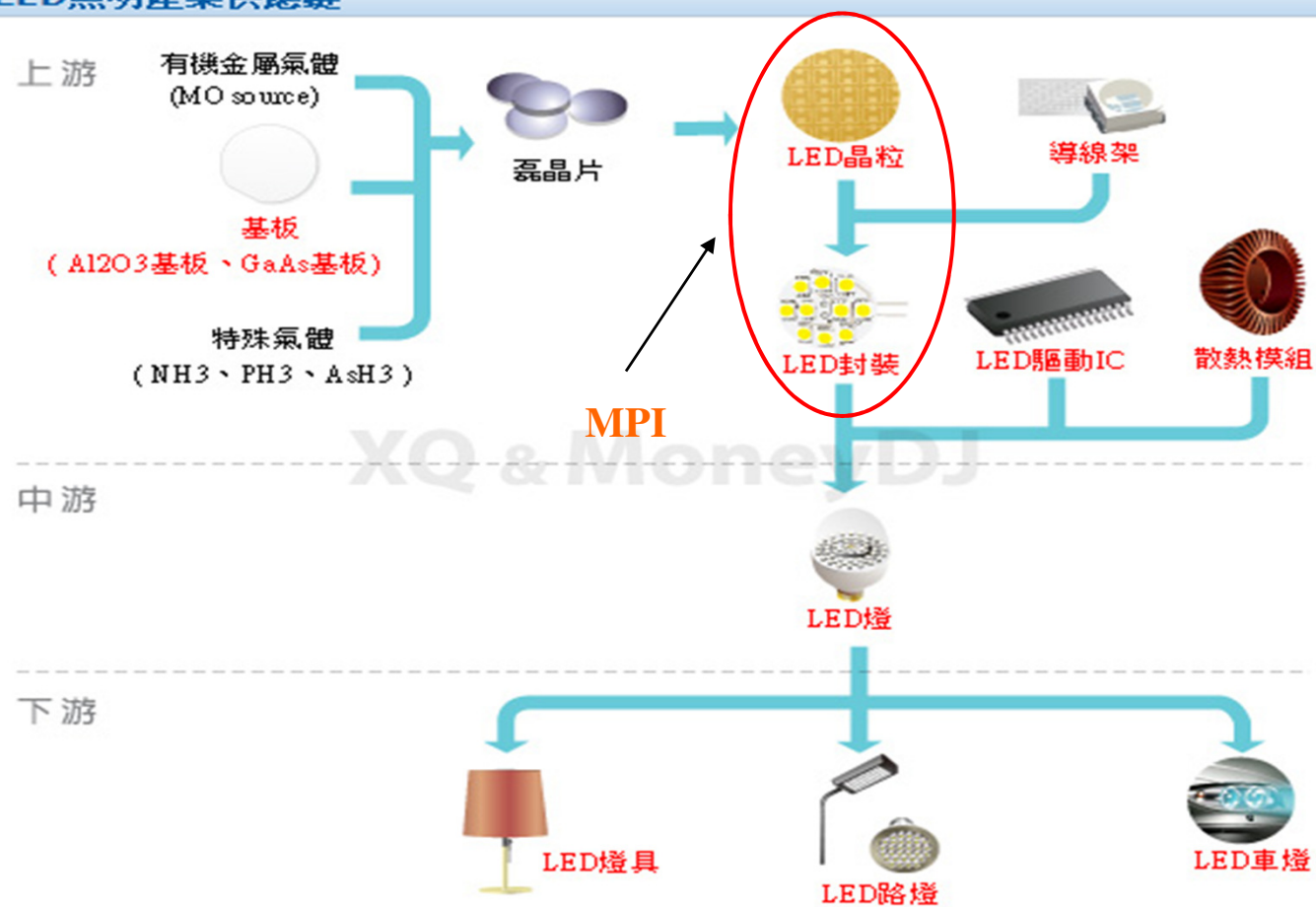




LED

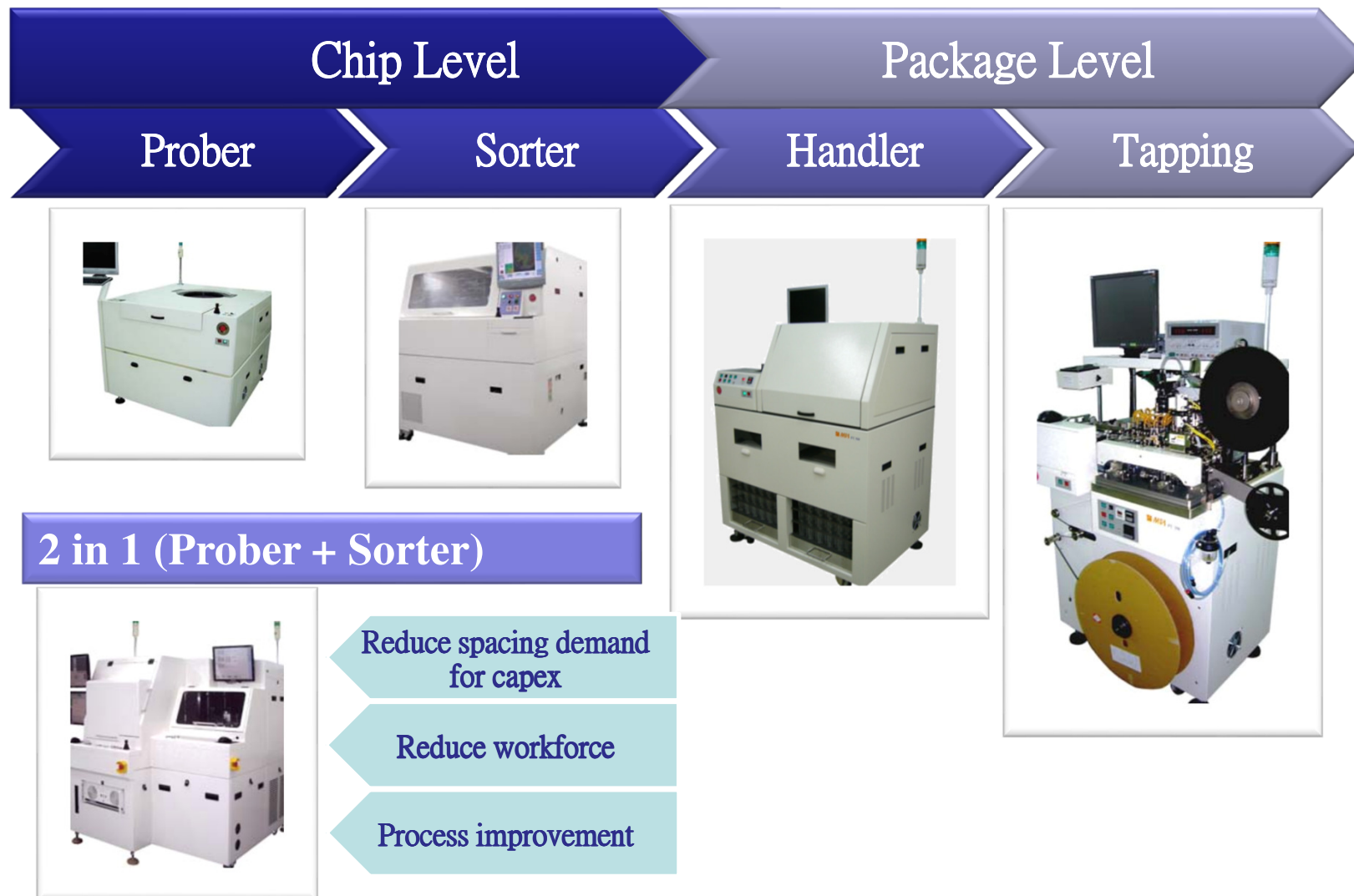
LED Food-chain

LED照明產業供應鏈





LED Turnkey Solution for Probing and Sorting in Chip level and package level



2 in 1 Machine (Prober + Sorter)



Specifications

Dimension

Wide : 1400mm
Height : 1650mm
 (not included signal-tower)
Length : 1530mm
Weight : 1000Kg

Loader

Wafer Cassette :
 2 (8 rings for GR6/GR5)
Bin Cassette :
 6 (25 bins with a single Cassette)

Wafer Size

Max 6"(150mm) after expansion
 (for GR6/GR5)

Bin Area 60mm X 60mm

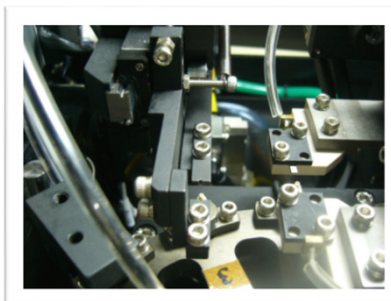
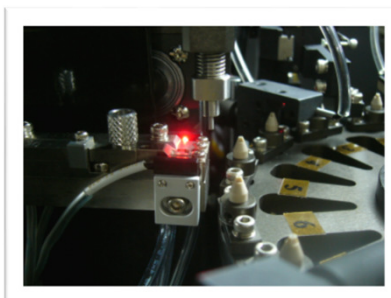
Pattern Recognition System

PR System 256 grey levels
Resolution : 640 pixels x 480 pixels
PR Accuracy: ± 0.025 mil(Die size
 64mil x 48mil)
Angle Range : $\pm 15^\circ$

- Reduce spacing demand for capex
- Reduce workforce
- Process improvement

Auto Sorting Machines

PT-380 SORTING



Specifications

Applicable device: Chip type LED

Loader: Parts feeder

Number of test station: 1 (2: option)

Test method: Side or top surface contact

Cycle time: Max0.15 sec/pcs (UPH24K)

(Including 90msec test time)

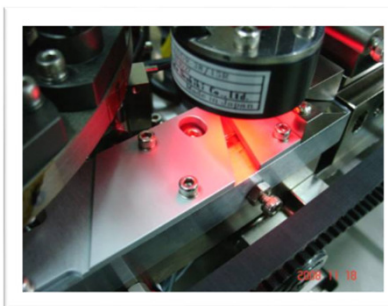
Number of bin: 256 bulk bins

Vacuum source: Vacuum pump

Size: W1,160 x H1,458 x D788(mm)

Auto Taping Machine

PT-350 TAPING



Specifications

Applicable device: Each chip type devices

Embossed Carrier tape width: 8 (mm)

Supply reel/ Accept reel: Max. $\phi 700$ / Max. $\phi 330$

Loader: Parts feeder with hopper

Seal method: Heat press reciprocating method

Cycle time: 0.09 sec/pcs (666pcs/min)

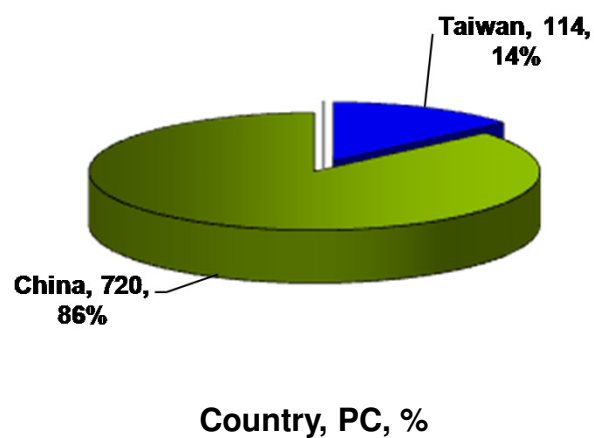
Vacuum source: Vacuum pump

Vision: Vision Align and check device

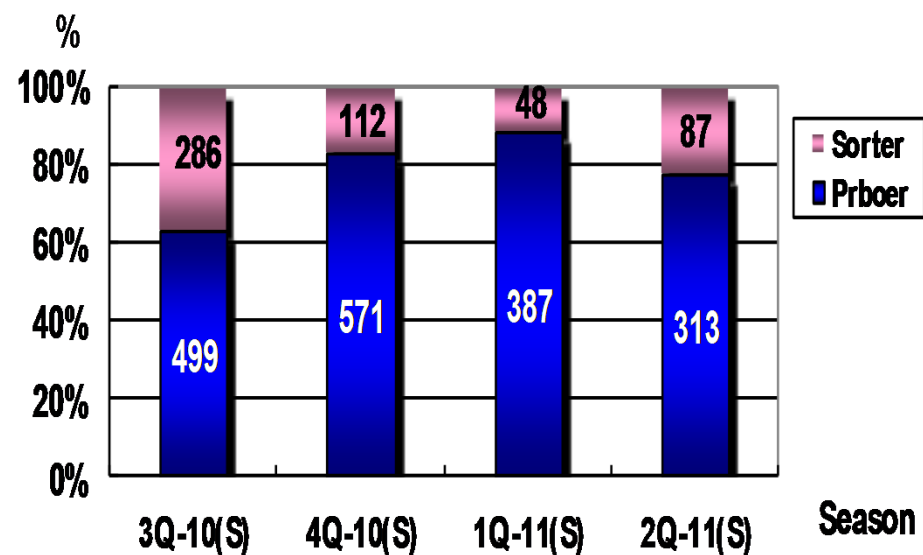
Size: W870 x H1,352 x D681(mm)

Geography & Product Mix

by Geography

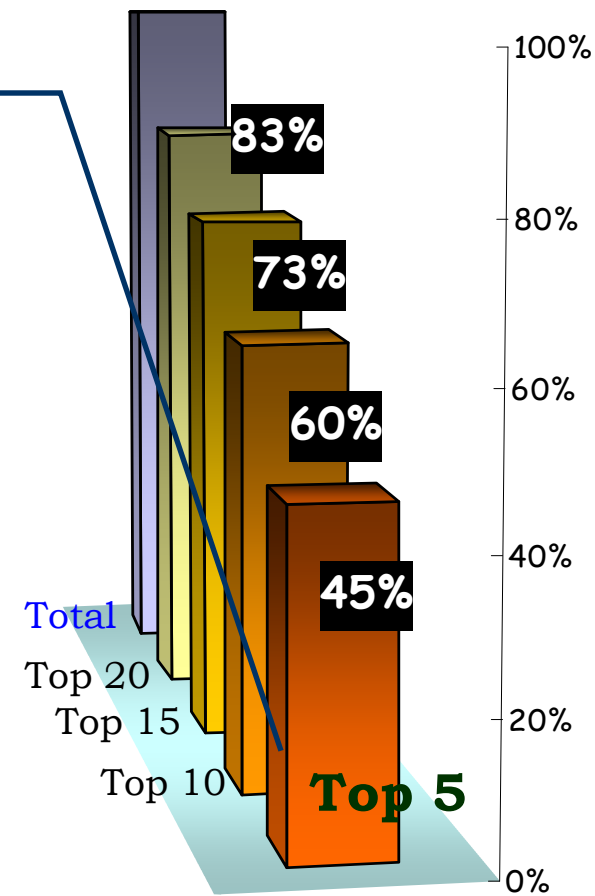


by Product



LEDA Client-Distribution (2011 YTD)

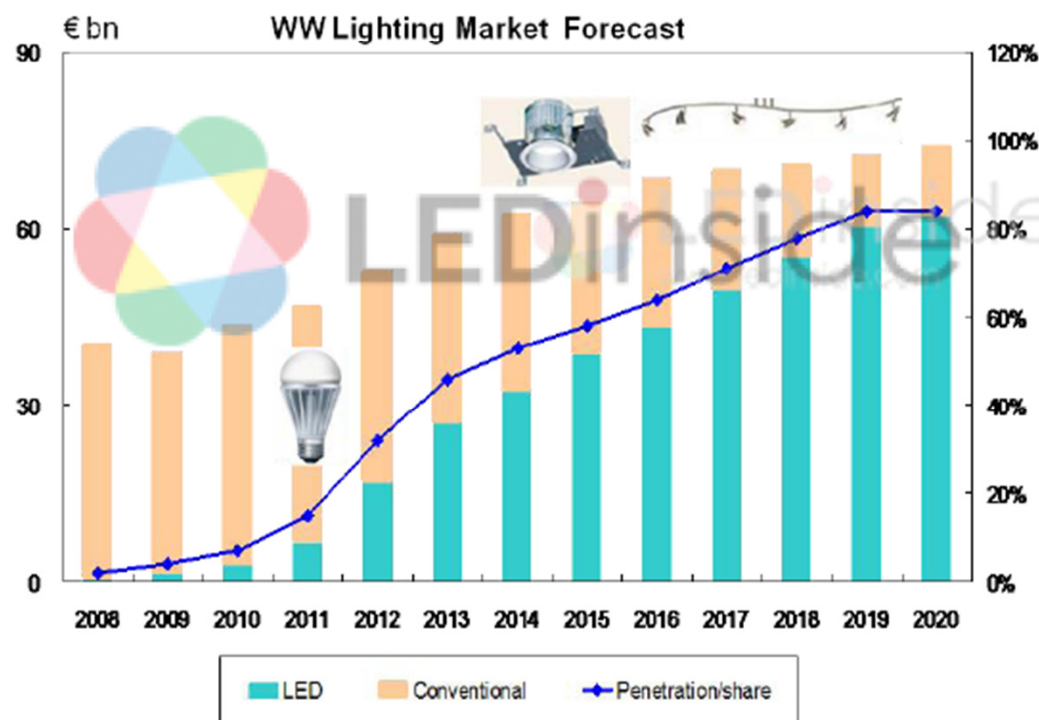
- 1 ANHUI SANAN OPTOELECTRONICS CO., LTD
- 2 ELEC-TECH PHOTOELECTRIC TECHNOLOGY (DALIAN) CO., LTD
- 3 EVERVISION ELECTRONICS LTD
- 4 SHANXI FEIHONG MICRO-NANO PHOTOELECTRONICS SCIENCE & TECHNOLOGY CO.,LTD
- 5 JIANGSU XINGUANGLIAN TECHNOLOGY CO., LTD



LED lighting - TAM

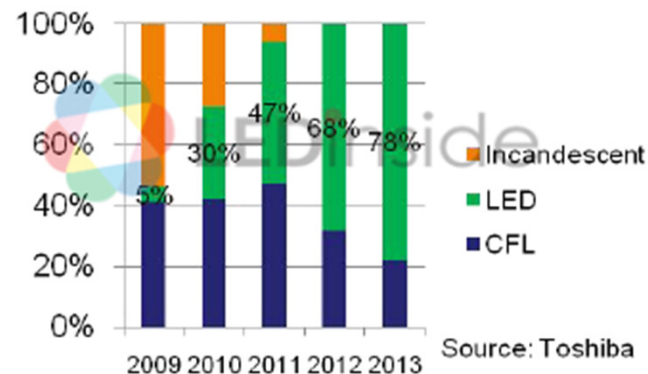
LED Lighting Is Taking Off

- The LED lighting is penetrating € 70bn lighting market:
- 50% penetration rate by 2015 is projected by Philips,
- and 30% LED lamp in 2010 is projected in Japan market.

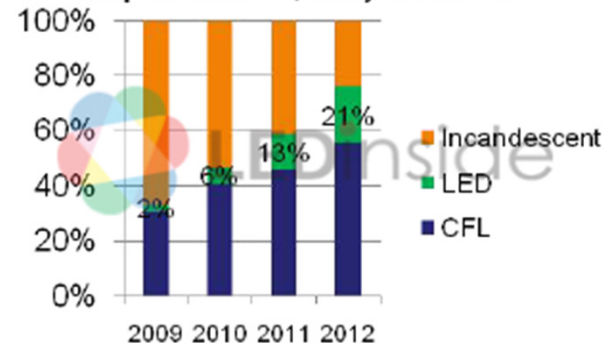


Source : LEDinside

JP Lamp Market Fct, End- 2010. 03

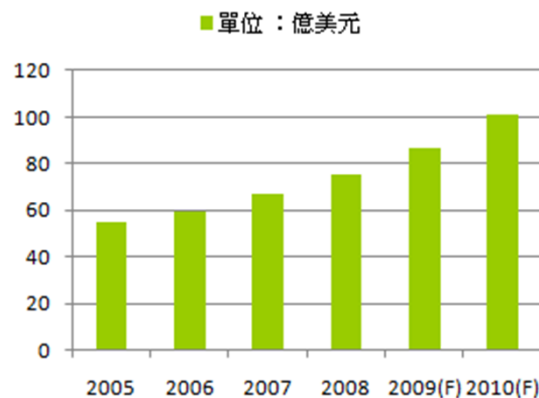


JP Lamp Market Fct, Early- 2010. 03

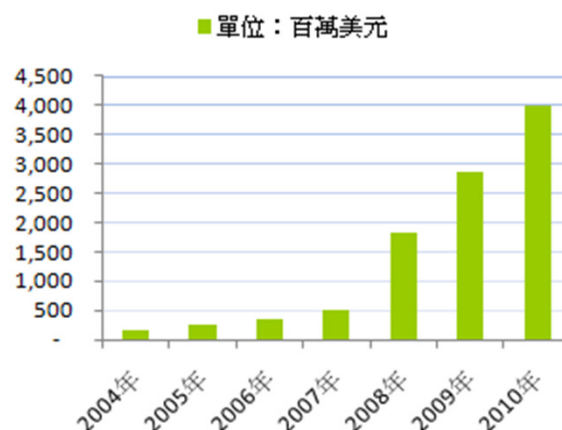


LED lighting - Trend

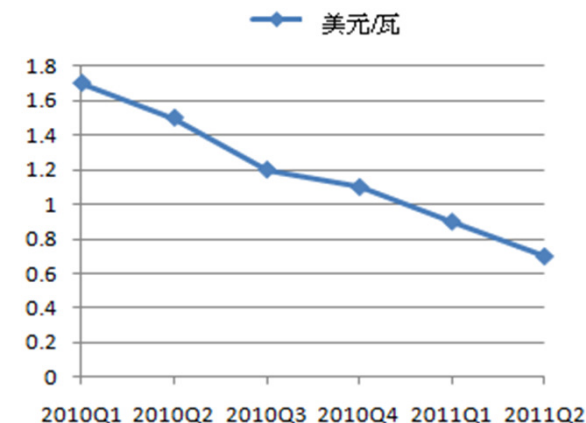
全球LED產值



全球照明用LED市場規模



高亮度照明每季價格走勢圖

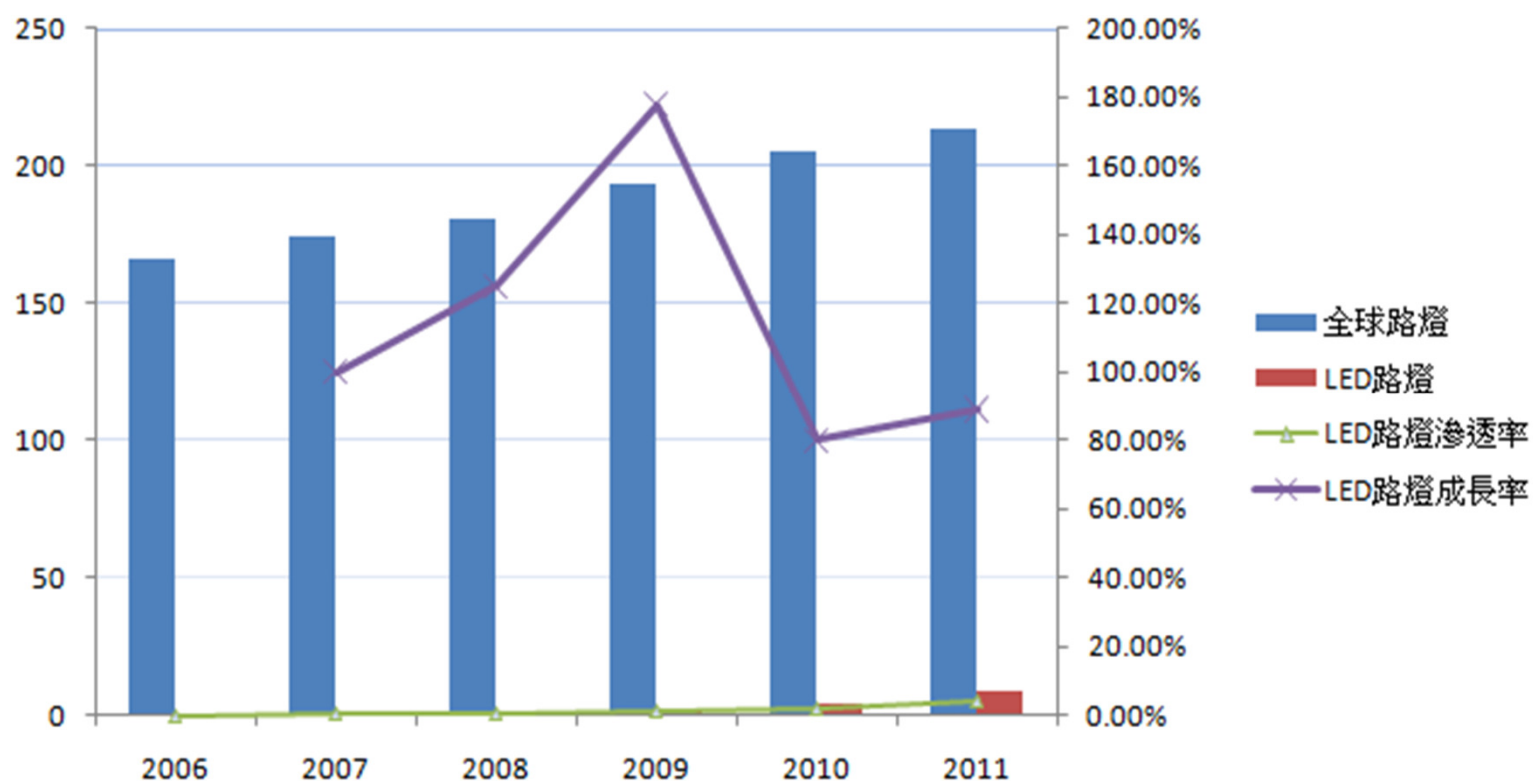


照明種類

項目	白光LED	日光燈	白熾燈泡
發光特性	冷性發光	氣體放電	加熱發光
反應速度	<1秒	<60秒	<150秒
壽命	>20000小時	10000小時	2000小時
發光效率(lm/W)	75	60~90	10~20
演色性(CRI值)	80	75	95
耗電量	省電約90%	省電50%	以白熾燈泡為基準等於1
特色	價格高、控制性佳小型化耐震動光束集中抗衝擊	省電但含汞，易碎	低效率、高耗電、壽命短、易碎

LED lighting - Street Lamp

2006年-2011年全球路燈與LED路燈數量與滲透率統計



資料來源：MoneyDJ理財網-熱門產業



LED lighting – Gov. lighting regulation

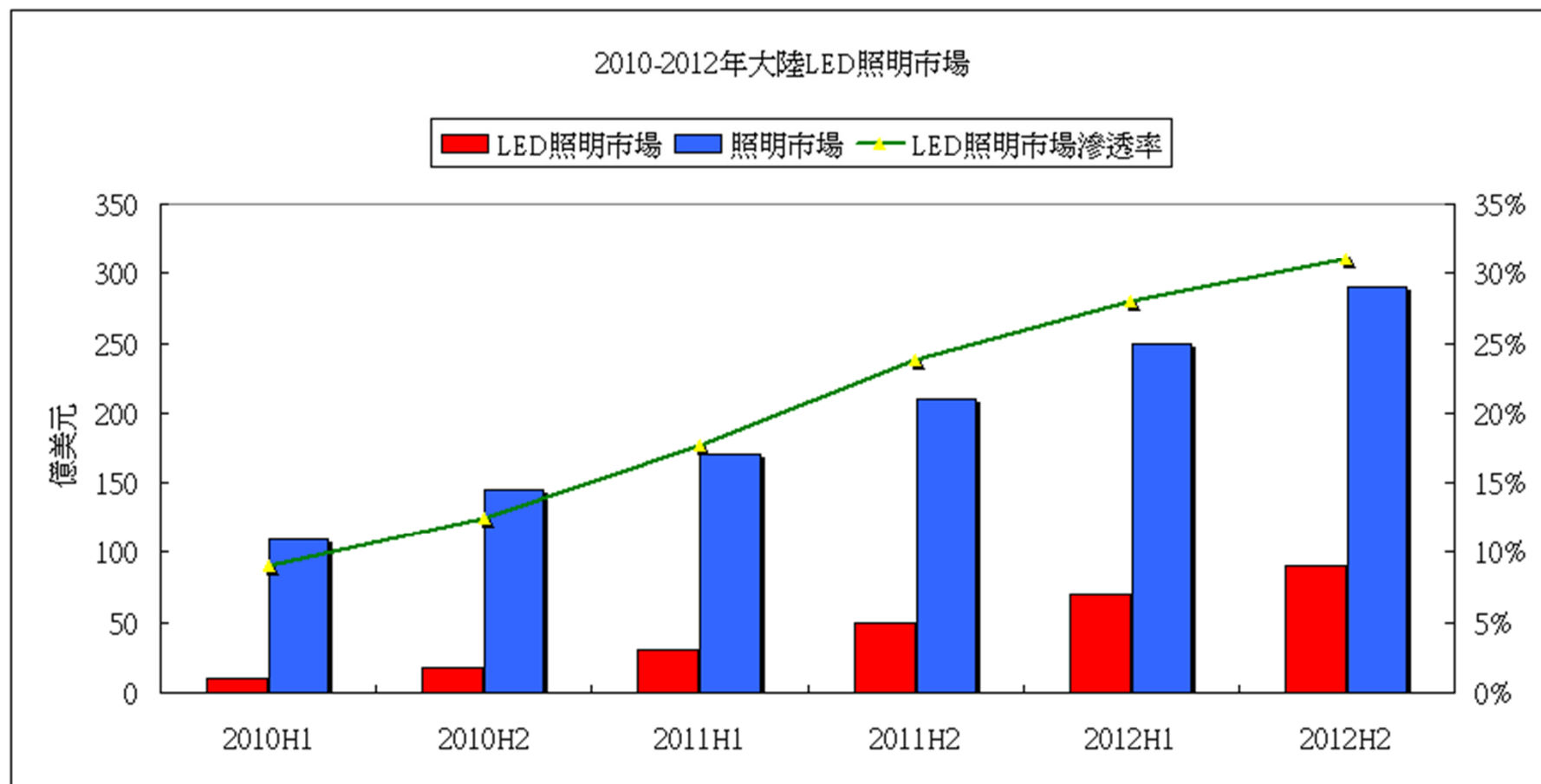
全球白熾燈禁用時間表

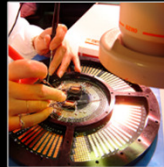
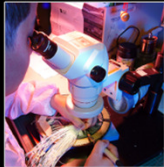
國家和地區	預計禁用(禁售)時間
澳洲	2009年停止生產，2010年起已逐步禁止使用傳統的白熾燈泡。
台灣	2010年已開始執行白熾燈禁產政策，預計2012年全面禁產。
日本	到2012年止，停止製造並銷售高能耗白熾燈。
美國	緩衝期2012年1月到2014年1月。大多數白熾燈泡2014年起在美禁止銷售。
中國	2013年底前禁止使用白熾燈，2016年將徹底淘汰普通照明用白熾燈。
歐盟各國 (英國)	歐盟9月起禁止銷售100瓦傳統燈泡，2012年起禁用所有瓦數的傳統燈泡。
加拿大	2012年起禁用白熾燈

大陸發展和改革委員會建議淘汰白熾燈之政策

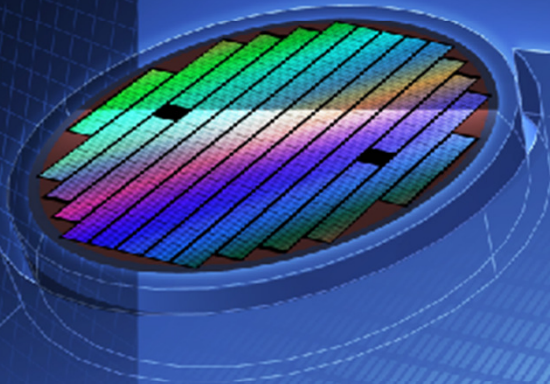
階段	時間	內容
一	2011年10月~2012年9月底	一年過渡期
二	2012年10月	禁止進口、販售100瓦以上之白熾燈
三	2014年10月	禁止進口、販售60瓦以上之白熾燈
四	2015年10月~2016年9月底	中期評估，調整後續政策
五	2016年10月	禁止進口、販售15瓦以上之白熾燈

LED lighting – China



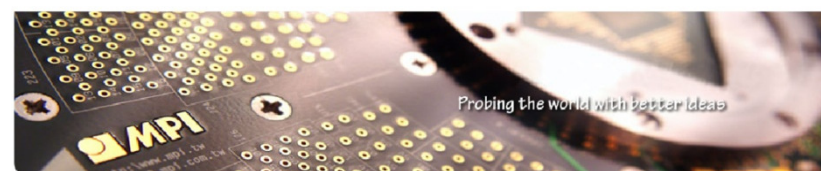
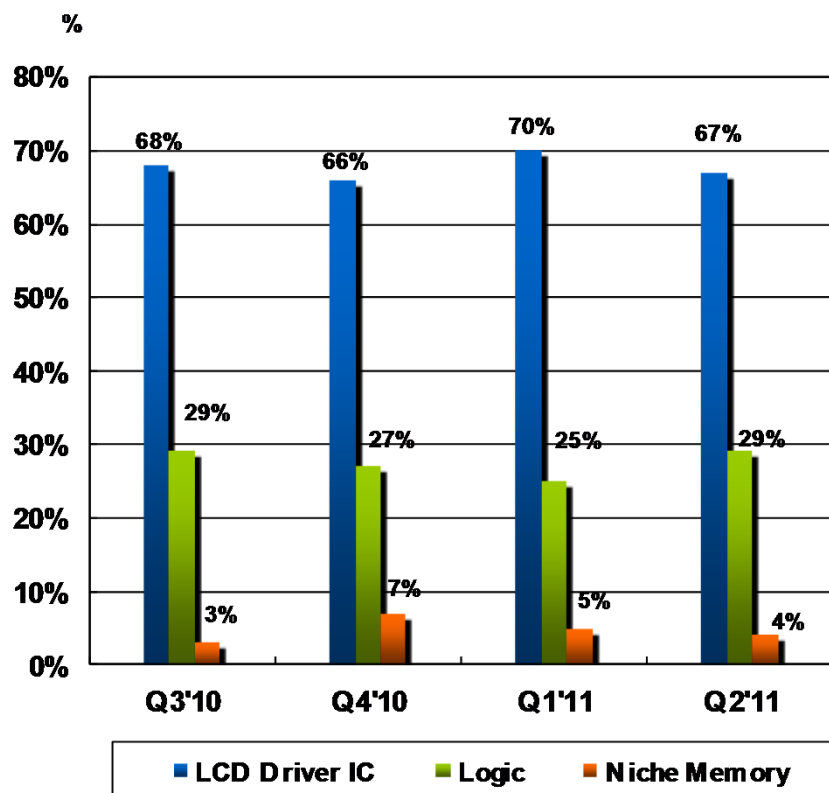


Probe Card



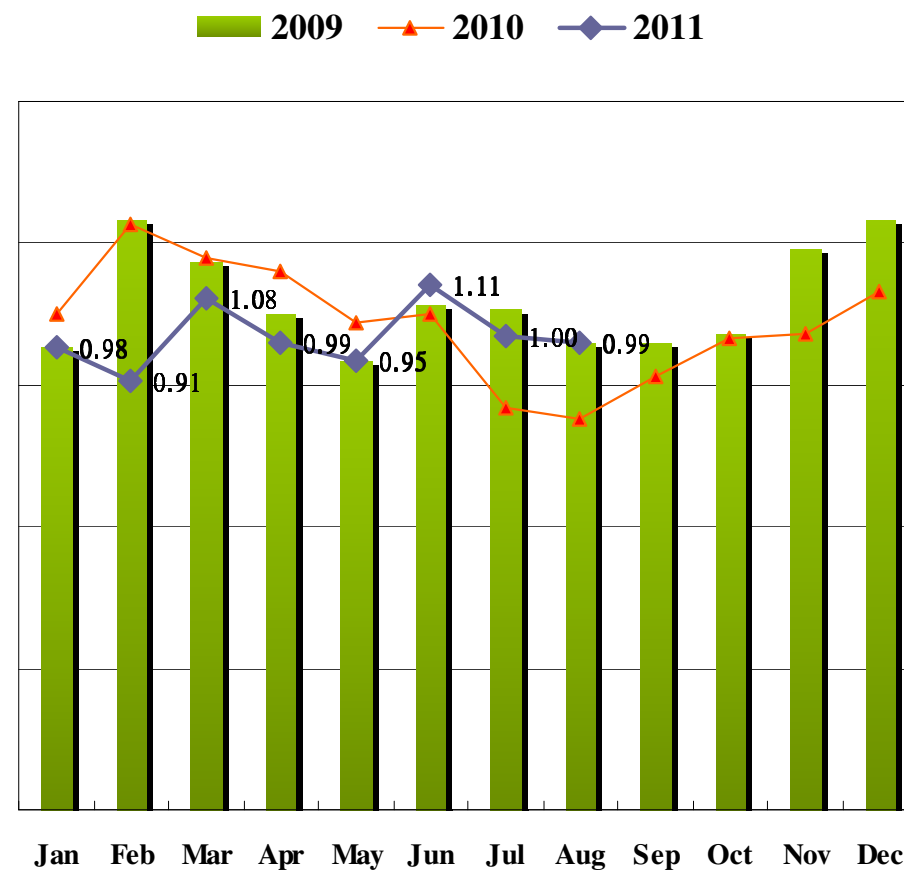
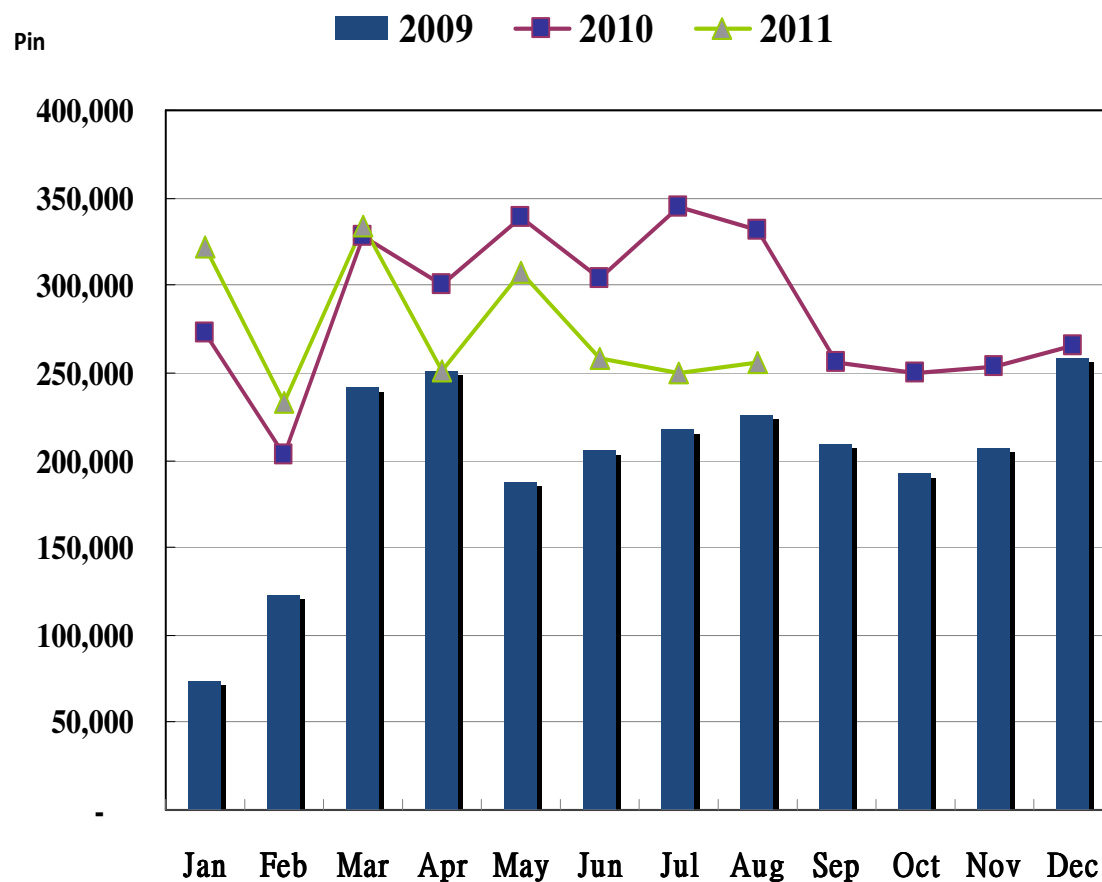


Product Mix





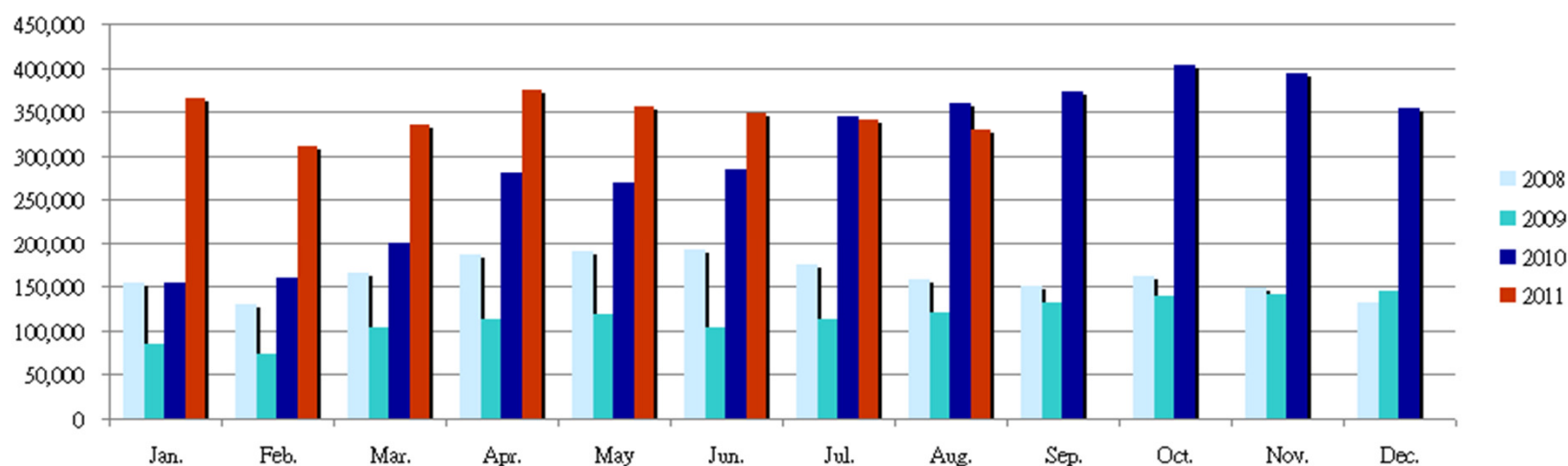
Pin-Shipment & B/B Ratio



Income Statement

NT\$1,000	H1' 2011		H1' 2010		YoY(%)
Net Sales	2,090,184	100%	1,349,575	100%	55%
Cost of Goods Sold	1,191,757	57.0%	817,647	60.6%	46%
Gross Profit	898,427	43.0%	531,928	39.4%	69%
Operating Expense	499,629	23.9%	328,787	24.4%	52%
Operating Income	396,986	19.0%	200,548	14.9%	98%
Investment Income & Others	46,617	2.2%	50,955	3.8%	-9%
Net Income (before tax)	443,603	21.2%	251,503	18.6%	76%
EPS (before tax)	5.62		3.23		

Net Sales NT\$ 1,000



Balance Sheet Highlight

Amount: NT\$ Million	H1' 2011		H1' 2010	
Cash and Cash Equivalents	1,379	23%	713	14%
Long-term Investments	464	7.8%	356	7%
Fixed Assets	1,026	17%	1,225	25%
Total Assets	5,975	100%	4,930	100%
LT Debt	91	1.5%	174	3.5%
Shareholders' Equity	2,996	50%	2,481	50%
EBITDA	444		252	

*EBITDA=operating income + depreciation & amortization expenses



Thank You

<http://www.mpi.com.tw>