

# MPI Corporation 6223.TT

## Presentation Disclaimer

---

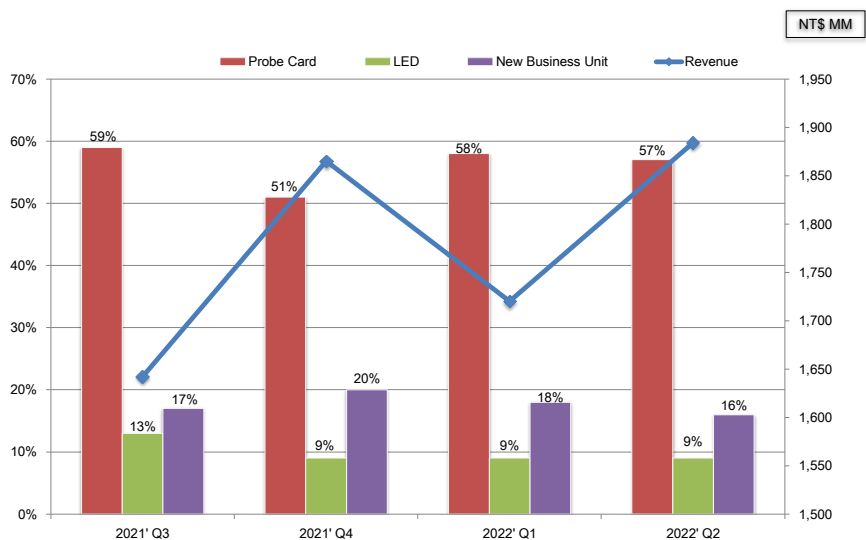
The information herein contains forward-looking statements. We have based these forward-looking statements on our current expectations and projections about future events. Although we believe that these expectations and projections are reasonable, such forward-looking statements are inherently subject to risks, uncertainties and assumptions about us, including, among other things: the intensely competitive Semi-conductor, and LED industries and markets; Cyclical nature of the semiconductor industry; Risks associated with global business activities; General economic and political conditions. All financial figures discussed herein are prepared pursuant to IFRS. All audited figures will be publicly announced upon the completion of our audited process.

# Company at a Glance

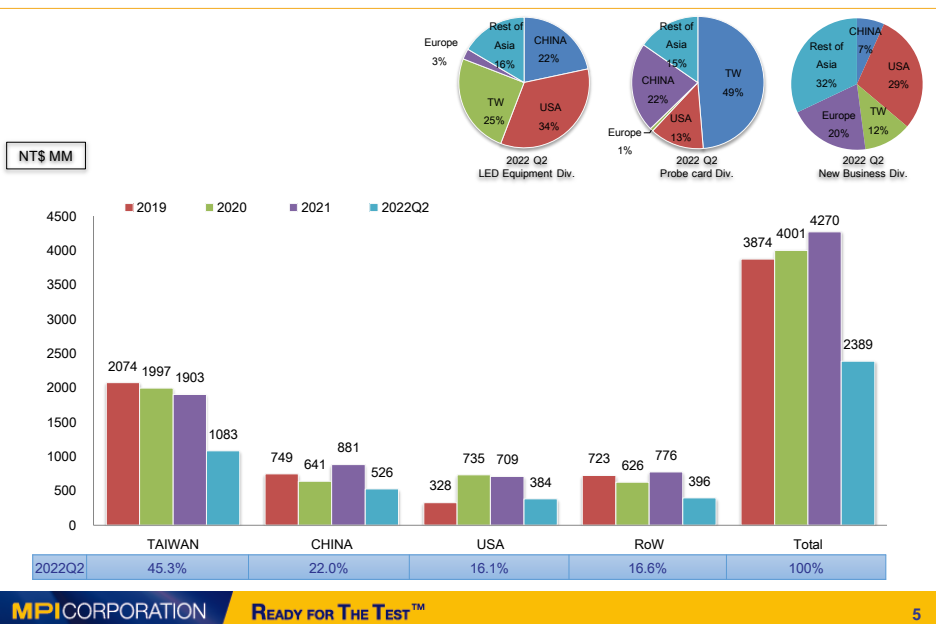


Founded	July, 25, 1995
Paid-in Capital	NTD\$ 941M (2022.7.31-the latest )
Employees	1,599 (2022.7.31)

# Business Portfolio



## Net Sales by Geography



5

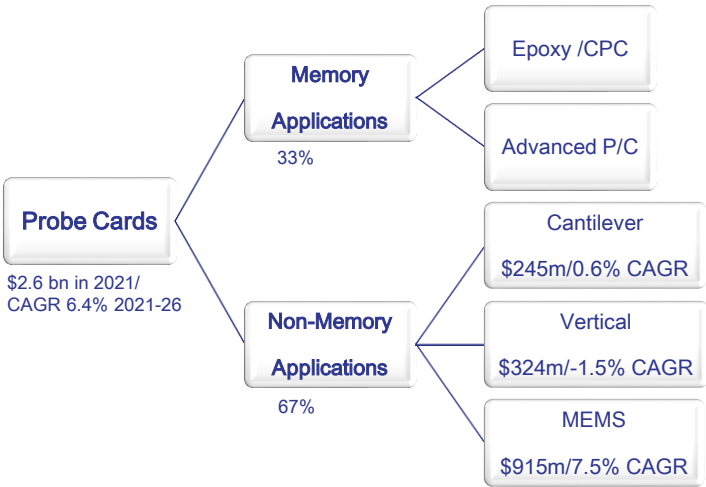
## Agenda

- Business Contents
  - Semi-conductor (Probe Card)
  - Photonics Automation (LED)
  - Thermal & AST
- Financial Statements

6

# Semi-conductor (Probe Card)

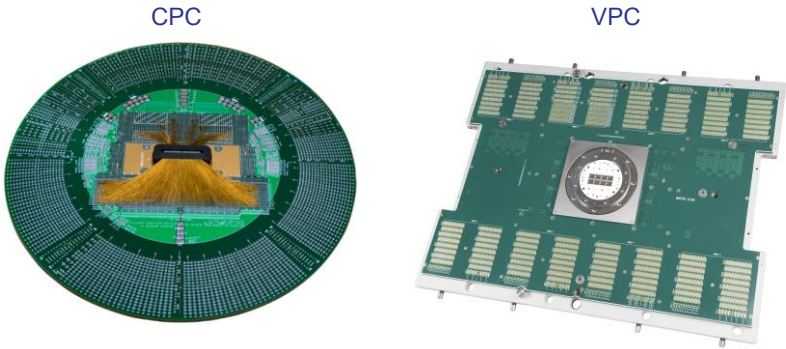
## Global Probe Card Market Update



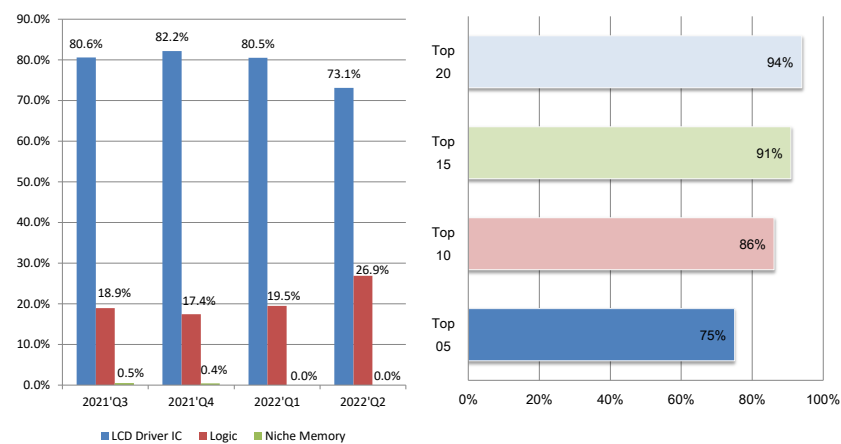
# Top 10 Probe Card Vendors (2016-2021)

(Rank)		2016	2017	2018	2019	2020	2021
FormFactor, Inc.	USA	1	1	1	1	1	1
Micronics Japan Co., Ltd.	Japan	2	2	3	3	3	3
Technoprobe	Italy	3	3	2	2	2	2
Japan Electronic Materials	Japan	4	4	4	4	4	4
MPI Corporation	Taiwan	5	5	5	5	5	5
SV TCL	Singapore	6	6	6	6	7	8
Microfriend	Korea	7	7	10	10	10	-
Korea Instrument	Korea	8	8	7	8	6	7
Cascade Microtech	USA	9	-	-	-	-	-
FEINMETALL	Germany	10	11	12	11	14	-

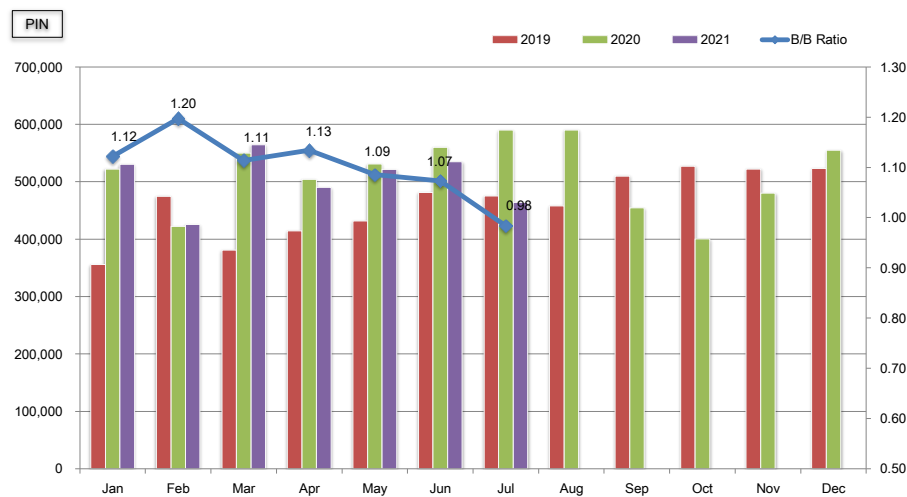
# CPC & VPC



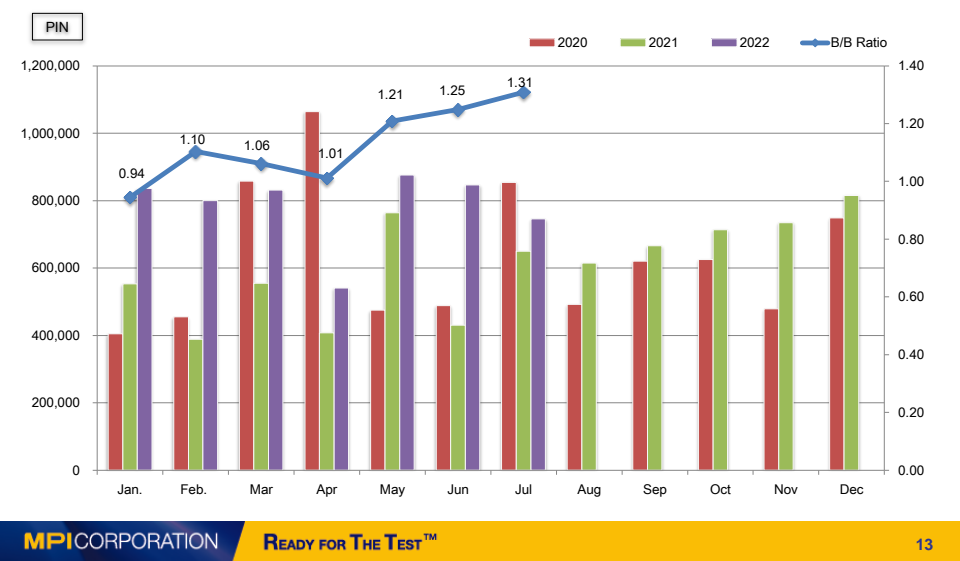
# Product Mix of CPC (Cantilever)



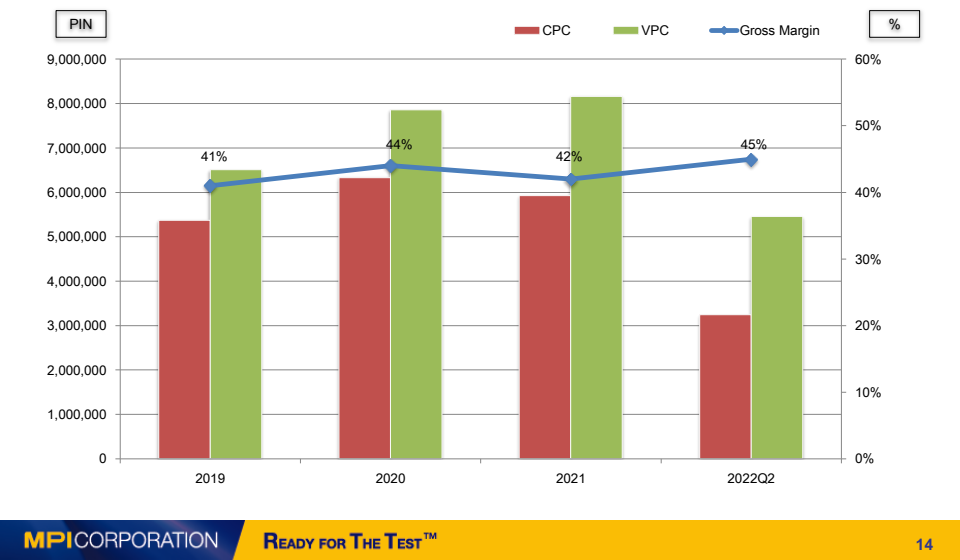
# CPC Pin-Shipment



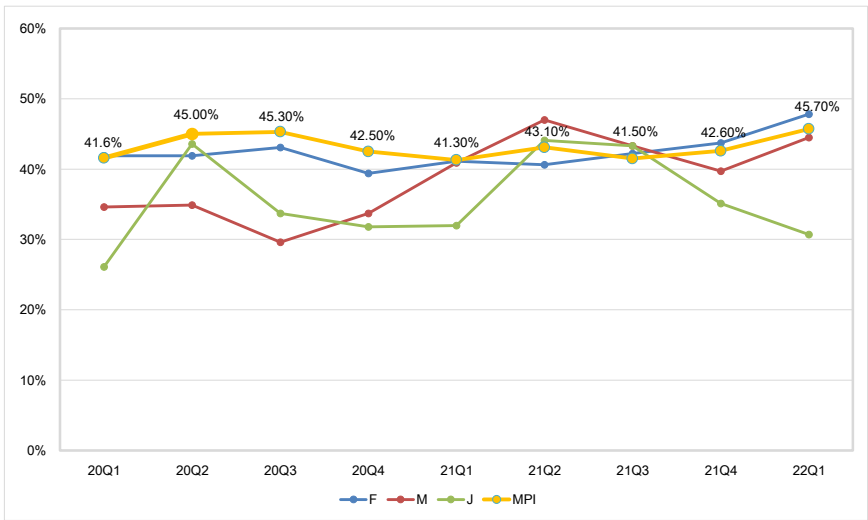
# VPC Pin-Shipment



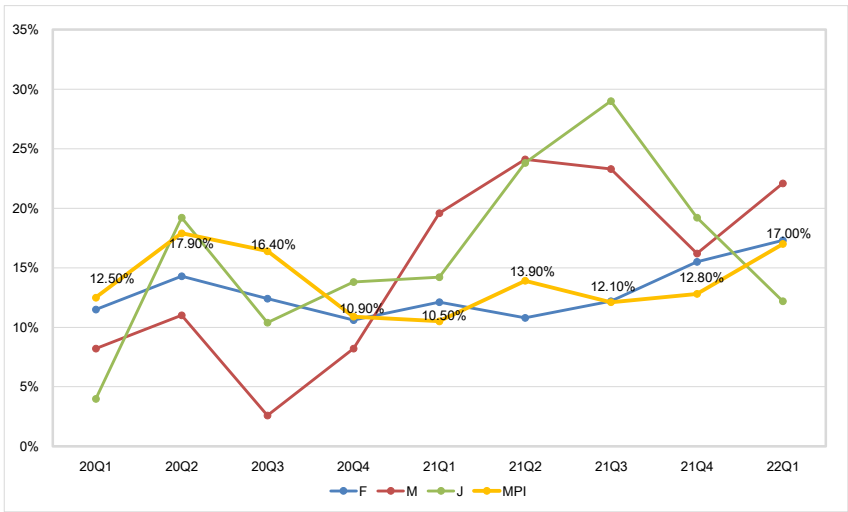
# CPC and VPC Yearly Status



# Gross Margin Between Global Peers



# Operating Margin Between Global Peers



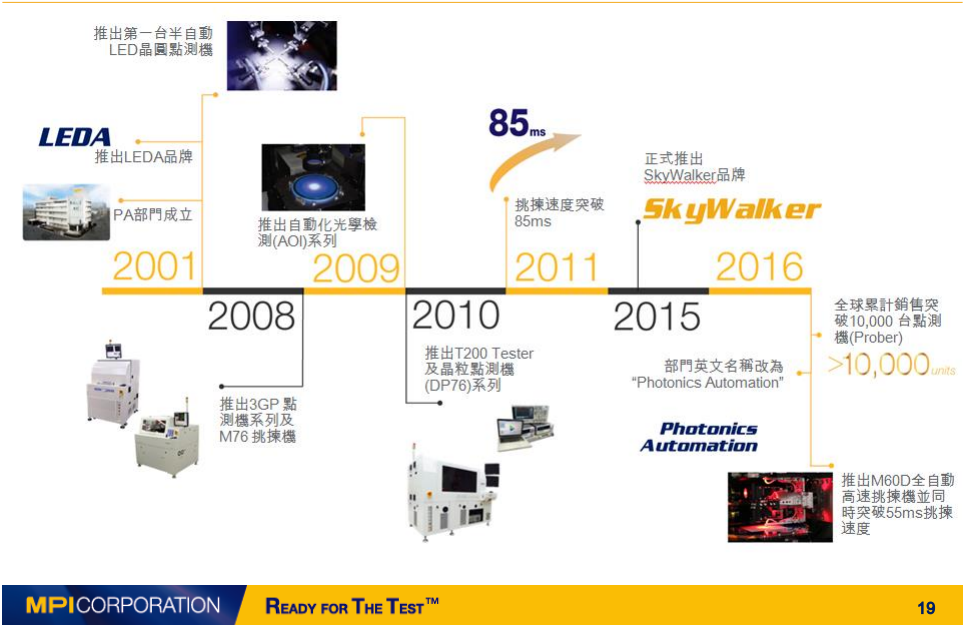


# Photonics Automation (LED)

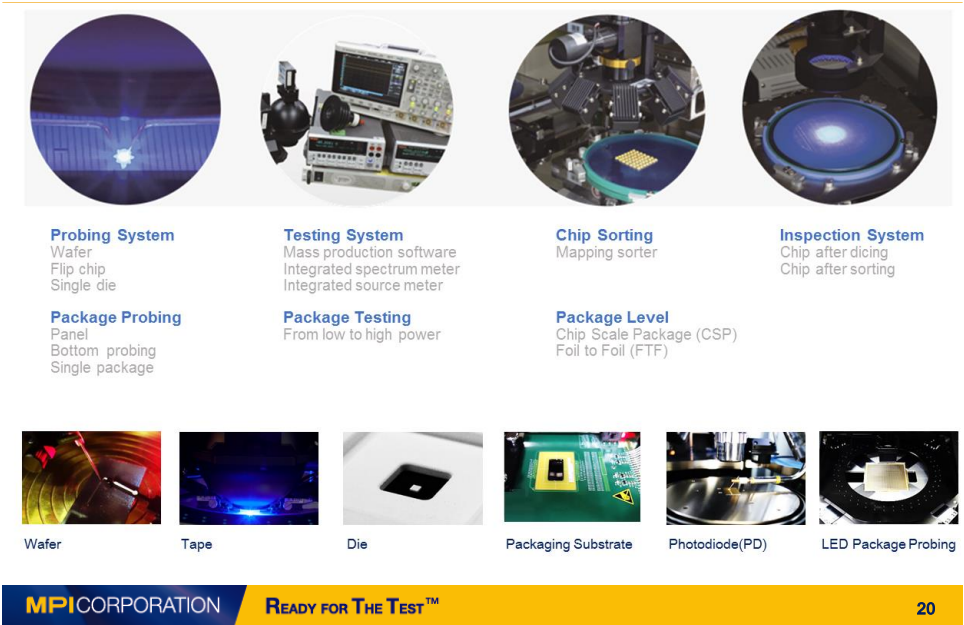
## Photonics Automation (PA) Overview



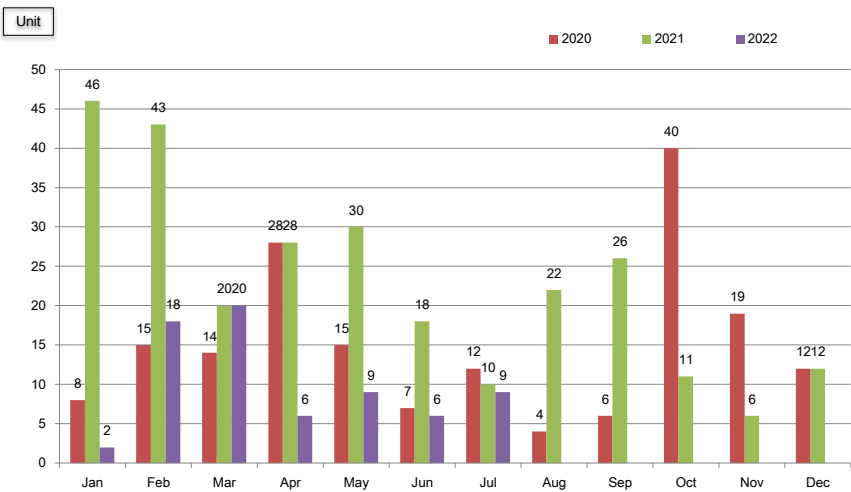
# Milestone



# Main Product Line



# 2022 Shipment



MPI CORPORATION

New Business Unit  
(Thermal/AST)

READY FOR THE TEST™

# MPIThermal

Hot and Cold Air Flow  
Environmental Temperature Test

-100°C  +300°C

**ThermalAir Series**  
Temperature Testing Systems



Applications & Industry Segments



Semiconductor



Automotive



Aerospace



Telecommunications



Fiber Optic



Electronics



Sensors



Advanced Technology

# MPIAdvanced Semiconductor Test

Engineering Probe Systems  
and  
RF Probe Products



50 – 300 mm



26 – 110 GHz



Applications & Industry Segments



Device Characterization



High Power



RF & mmW



Design Validation



Failure Analysis



Wafer Level Reliability



Silicon Photonics



Laser Cutter

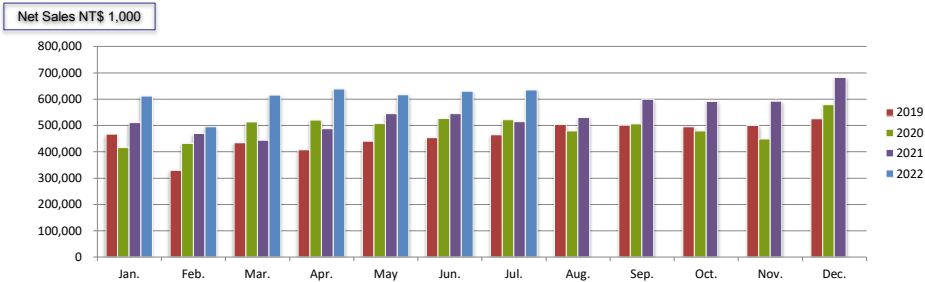
# Financial Statements

## Balance Sheet Highlight

NT\$Million	2Q 2022		2Q 2022	
Cash and Cash Equivalents	1,589	15%	1,241	14%
Fixed Assets	4,418	42%	3,820	42%
Total Assets	10,401	100%	9,103	100%
LT Debt	1,091		763	
Shareholders' Equity	6,286	60%	5,586	61%
EBITDA	739		358	
*EBITDA=operating income + depreciation & amortization expenses				

# Income Statement

NT\$1,000	Q2' 2022		Q2' 2022	
Net Sales	3,604,032	100%	3,000,804	100%
Cost of Goods Sold	1,975,804	55%	1,734,085	58%
Gross Profit	1,628,228	45%	1,266,719	42%
Operating Expense	1,007,562	28%	897,408	30%
Operating Income	620,666	17%	369,311	10%
Investment Income & Others	118,569		-11,213	
Net Income (before tax)	607,788	17%	296,278	10%
EPS	6.46		3.20	



MPI CORPORATION

Thank You

<http://www.mpi-corporation.com>

READY FOR THE TEST™