

MPI Corporation 6223.TT

READY FOR THE TEST™

Presentation Disclaimer

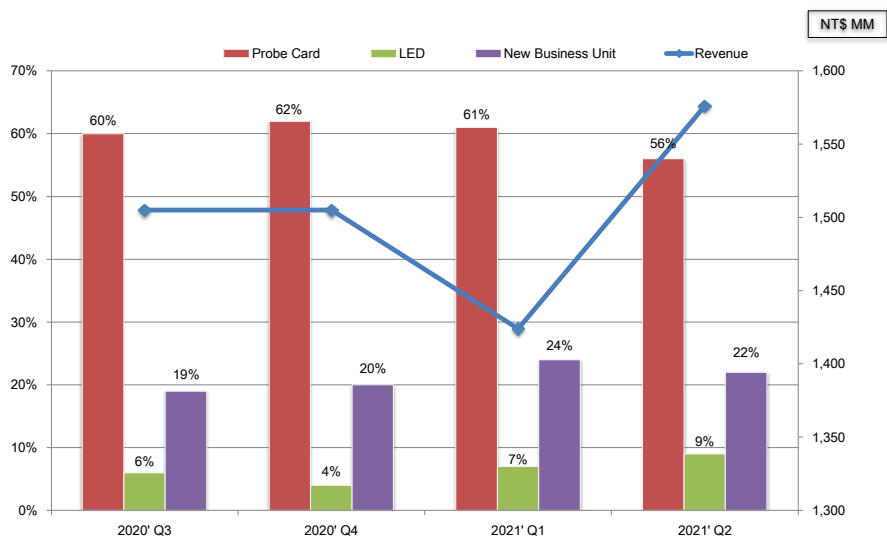
The information herein contains forward-looking statements. We have based these forward-looking statements on our current expectations and projections about future events. Although we believe that these expectations and projections are reasonable, such forward-looking statements are inherently subject to risks, uncertainties and assumptions about us, including, among other things: the intensely competitive Semi-conductor, and LED industries and markets; Cyclical nature of the semiconductor industry; Risks associated with global business activities; General economic and political conditions. All financial figures discussed herein are prepared pursuant to IFRS. All audited figures will be publicly announced upon the completion of our audited process.

Company at a Glance

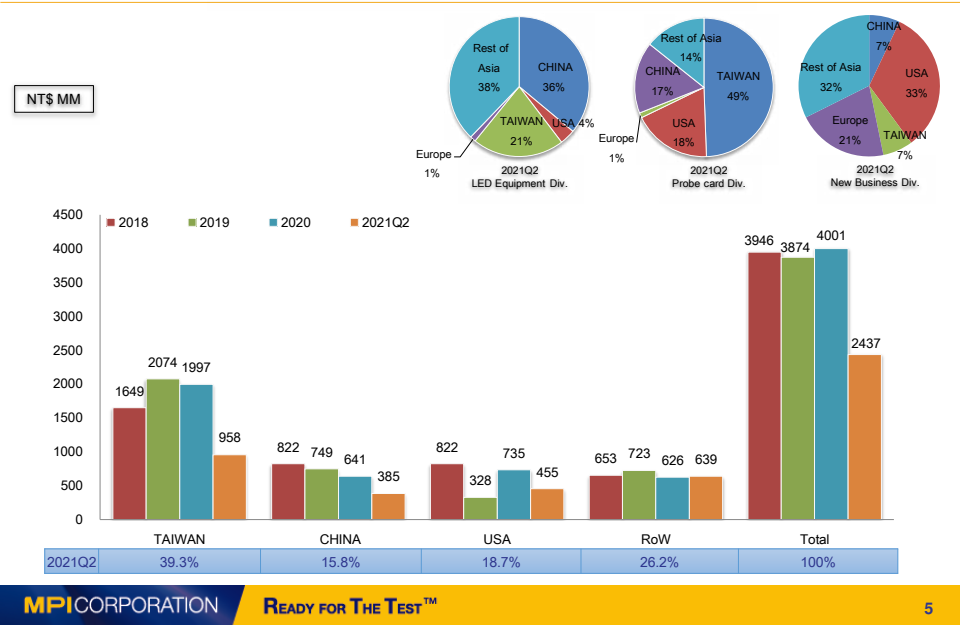


Founded	July, 25, 1995
Paid-in Capital	NTD\$ 941M (2021.8.31-the latest)
Employees	1,599 (2021.8.31)

Business Portfolio



Net Sales by Geographic



5

Agenda

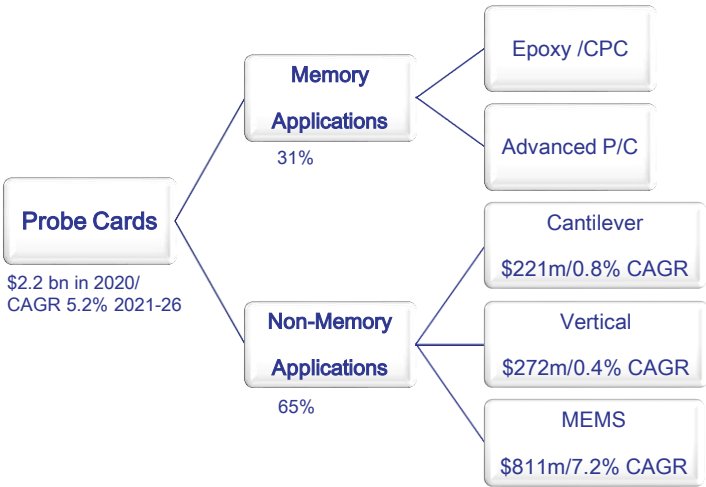
- Business Contents
 - Semi-conductor (Probe Card)
 - Photonics Automation (LED)
 - Thermal & AST

- Financial Statements

6

Semi-conductor (Probe Card)

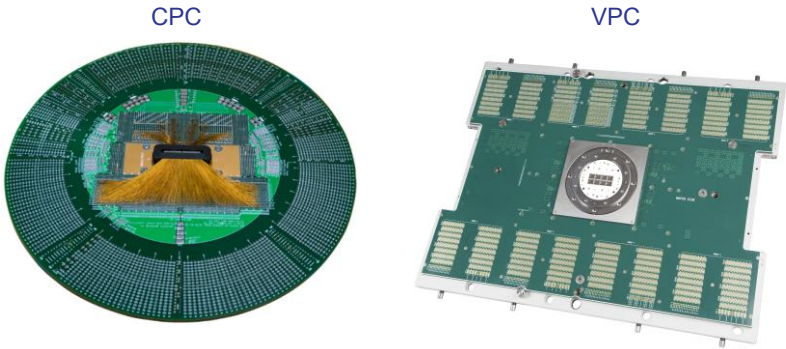
Global Probe Card Market Update



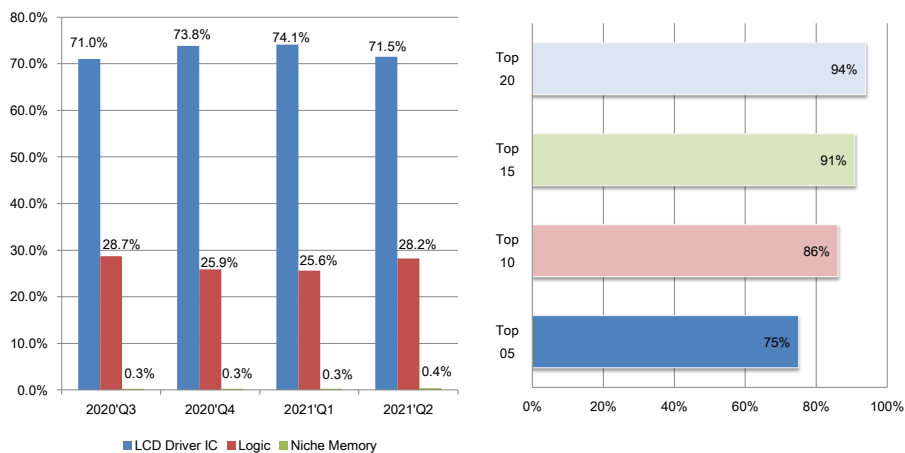
Top 10 Probe Card Vendors (2015-2020)

	(Rank)	2015	2016	2017	2018	2019	2020
FormFactor, Inc.	USA	1	1	1	1	1	1
Micronics Japan Co., Ltd.	Japan	2	2	2	3	3	3
Technoprobe	Italy	3	3	3	2	2	2
Japan Electronic Materials	Japan	4	4	4	4	4	4
MPI Corporation	Taiwan	5	5	5	5	5	5
SV TCL	Singapore	7	6	6	6	6	7
Microfriend	Korea	10	7	7	10	10	10
Korea Instrument	Korea	9	8	8	7	8	6
Cascade Microtech	USA	6	9	-	-	-	-
FEINMETALL	Germany	11	10	11	12	11	14

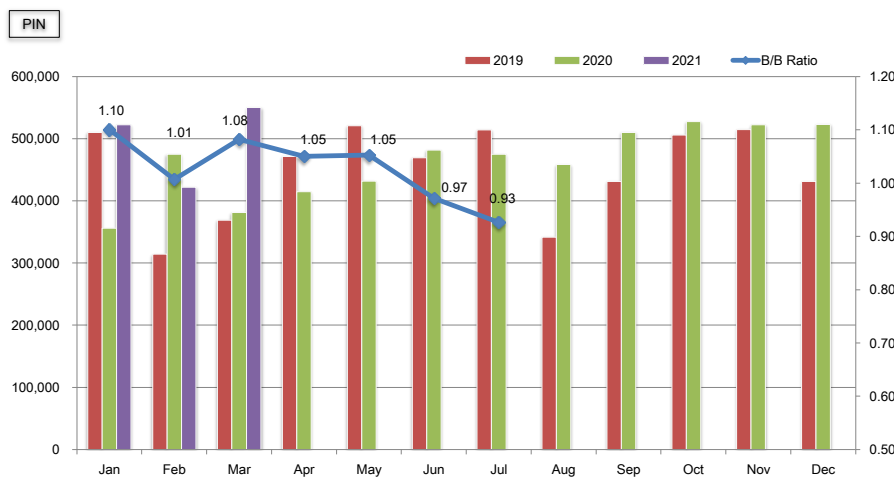
CPC & VPC



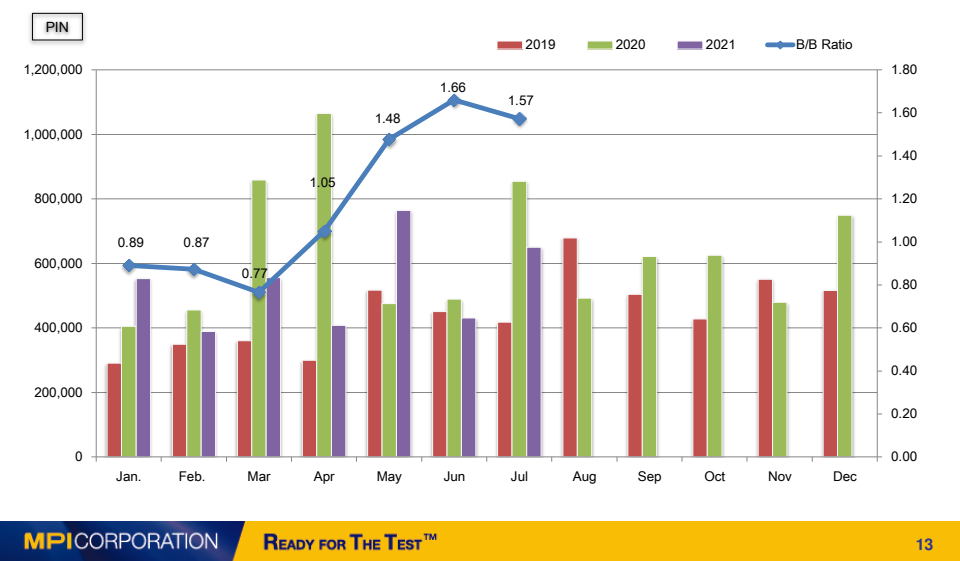
Product Mix of CPC (Cantilever)



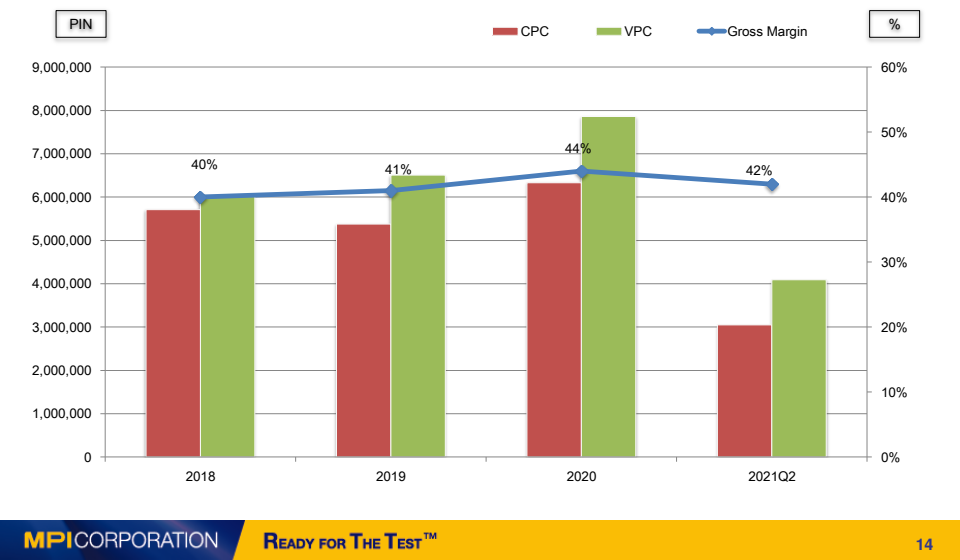
CPC Pin-Shipment



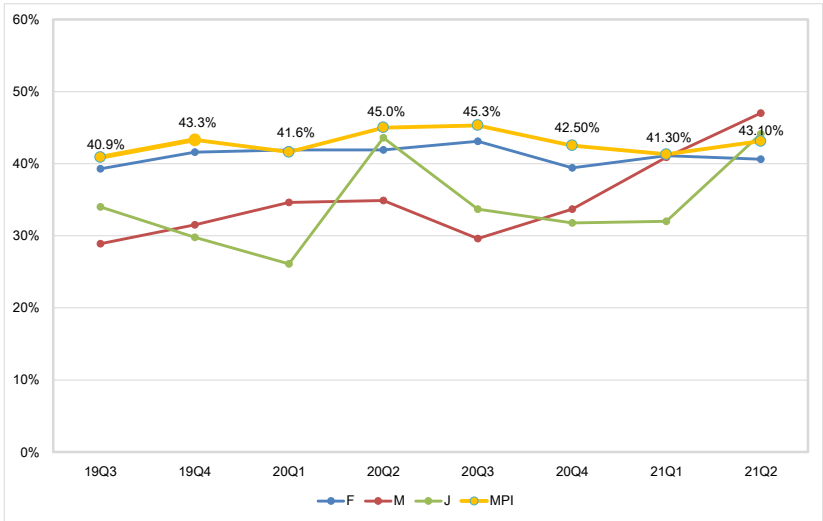
VPC Pin-Shipment



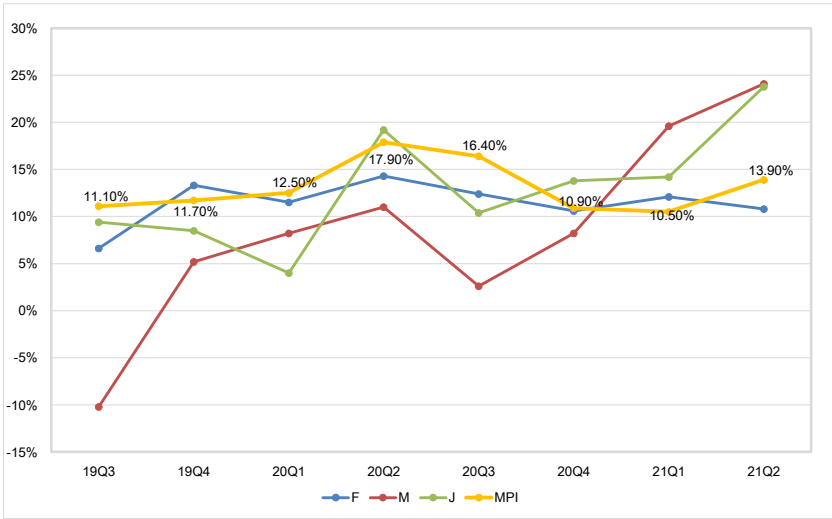
CPC and VPC Yearly Status



Gross Margin Between Global Peers



Operating Margin Between Global Peers

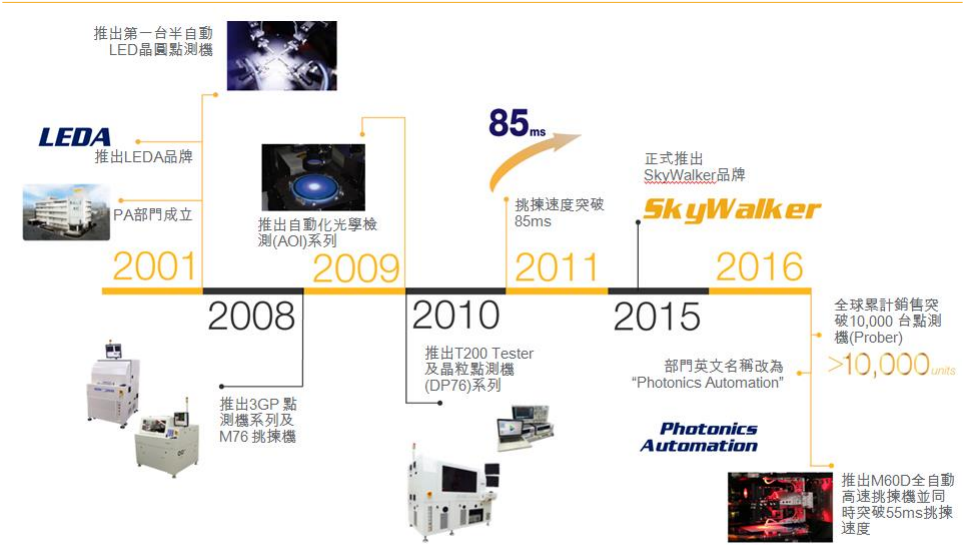


Photonics Automation (LED)

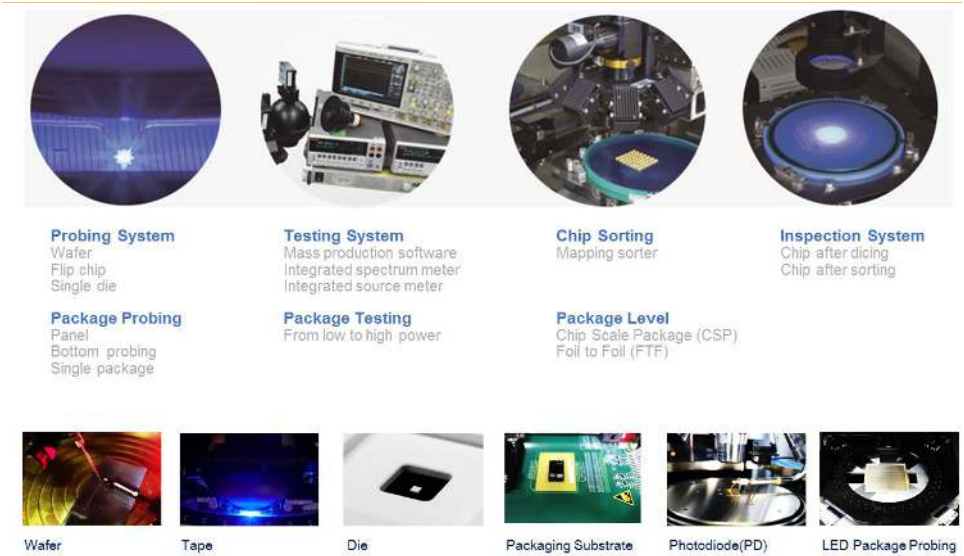
Photonics Automation (PA) Overview



Milestone



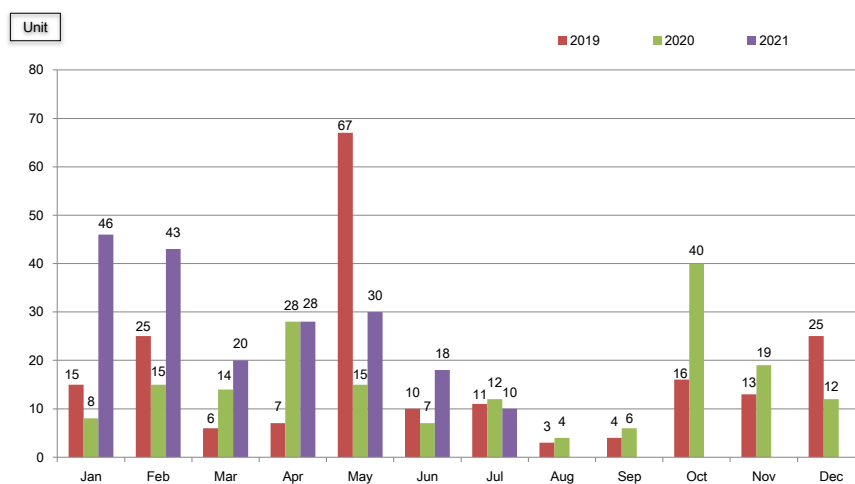
Main Product Line



Wafer Technology Migration



2021 Shipment





New Business Unit

(Thermal/AST)

READY FOR THE TEST™

MPI Thermal

Hot and Cold Air Flow
Environmental Temperature Test

-100°C +300°C

ThermalAir Series

Temperature Testing Systems



Applications & Industry Segments



Semiconductor



Automotive



Aerospace



Telecommunications



Fiber Optic



Electronics



Sensors



Advanced Technology

MPI Advanced Semiconductor Test

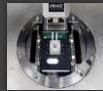
Engineering Probe Systems
and
RF Probe Products



Applications & Industry Segments



Device Characterization



High Power



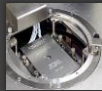
RF & mmW



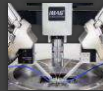
Design Validation



Failure Analysis



Wafer Level Reliability



Silicon Photonics



Laser Cutter

MPI CORPORATION

Financial Statements

READY FOR THE TEST™

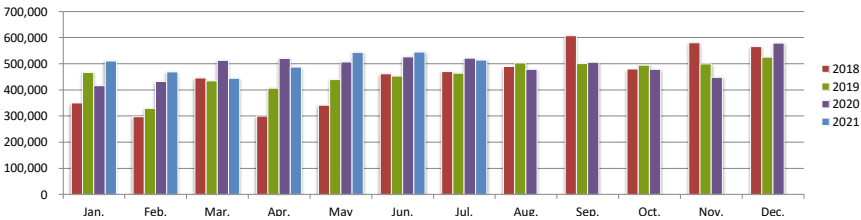
Balance Sheet Highlight

	2Q 2021		2Q 2020	
Cash and Cash Equivalents	1,241	14%	1,190	14%
Fixed Assets	3,820	42%	3,442	41%
Total Assets	9,103	100%	8,330	100%
LT Debt	763		309	
Shareholders' Equity	5,586	61%	4,534	54%
EBITDA	358		431	
*EBITDA=operating income + depreciation & amortization expenses				

Income Statement

NT\$1,000	Q2' 2021		Q2' 2020	
Net Sales	3,000,804	100%	2,914,450	100%
Cost of Goods Sold	1,734,085	58%	1,650,129	57%
Gross Profit	1,266,719	42%	1,264,321	43%
Operating Expense	897,408	30%	815,362	28%
Operating Income	369,311	12%	448,959	15%
Investment Income & Others	-11,213		-17,677	
Net Income (before tax)	296,278	10%	365,598	13%
EPS	3.20		4.57	

Net Sales NT\$ 1,000



MPICORPORATION



Thank You



<http://www.mpi-corporation.com>

READY FOR THE TEST™