

# MPI Corporation 6223.TT

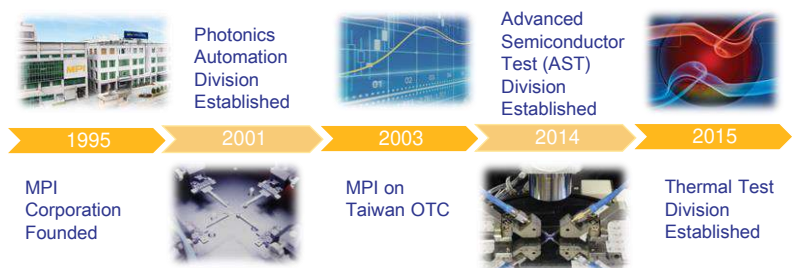
READY FOR THE TEST™

## Presentation Disclaimer

---

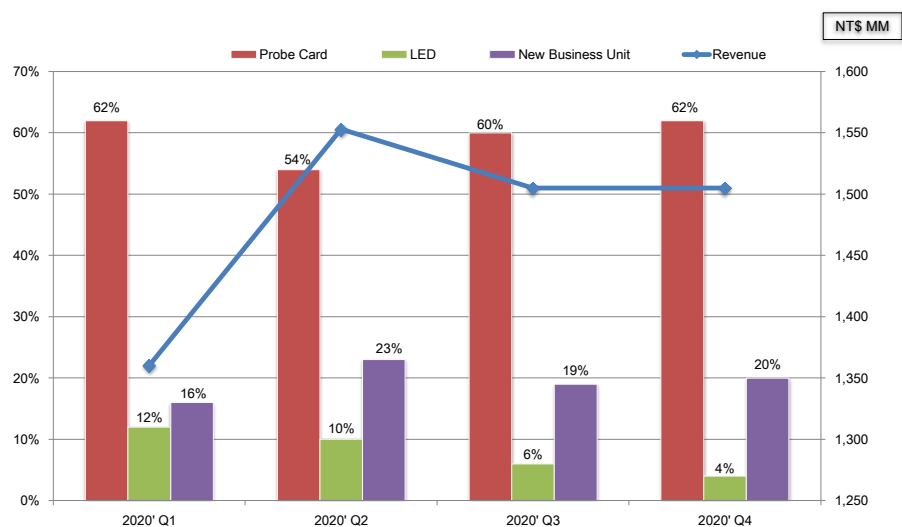
The information herein contains forward-looking statements. We have based these forward-looking statements on our current expectations and projections about future events. Although we believe that these expectations and projections are reasonable, such forward-looking statements are inherently subject to risks, uncertainties and assumptions about us, including, among other things: the intensely competitive Semi-conductor, and LED industries and markets; Cyclical nature of the semiconductor industry; Risks associated with global business activities; General economic and political conditions. All financial figures discussed herein are prepared pursuant to IFRS. All audited figures will be publicly announced upon the completion of our audited process.

# Company at a Glance

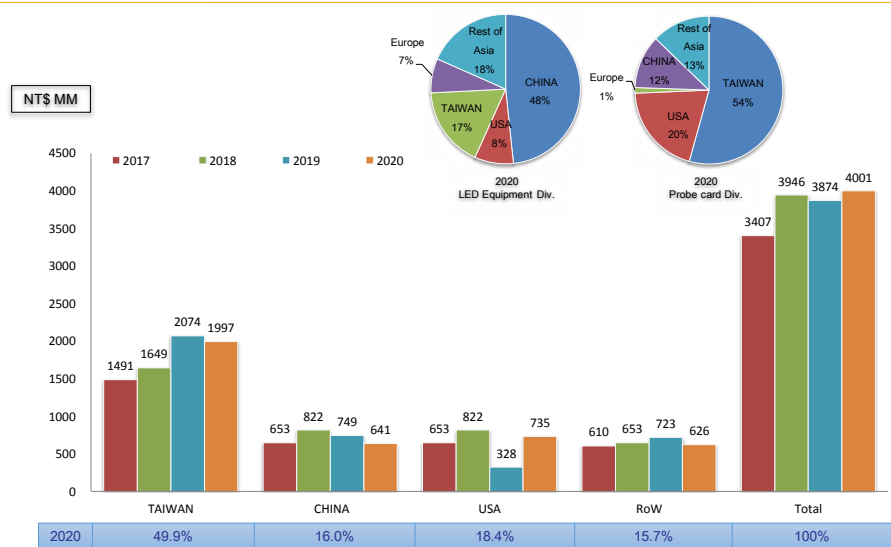


Founded	July, 25, 1995
Paid-in Capital	NTD\$ 940M (2021.7.31-the latest )
Employees	1,596 (2021.7.31)

# Business Portfolio



# Net Sales by Geographic



## Agenda

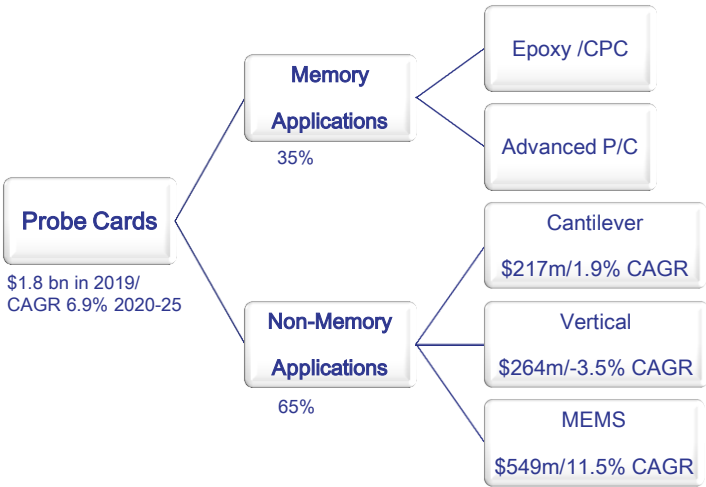
### ■ Business Contents

- Semi-conductor (Probe Card)
- Photonics Automation (LED)
- Thermal & AST

### ■ Financial Statements

# Semi-conductor (Probe Card)

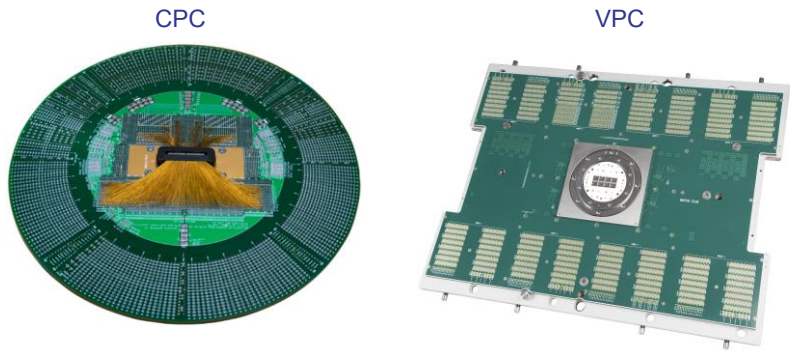
## Global Probe Card Market Update



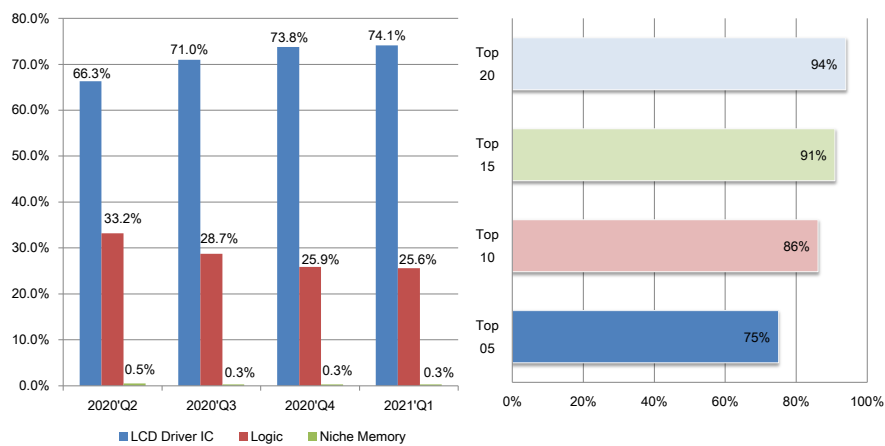
# Top 10 Probe Card Vendors (2015-2020)

(Rank)		2015	2016	2017	2018	2019	2020
	FormFactor, Inc.	USA	1	1	1	1	1
	Micronics Japan Co., Ltd.	Japan	2	2	2	3	3
	Technoprobe	Italy	3	3	3	2	2
	Japan Electronic Materials	Japan	4	4	4	4	4
	MPI Corporation	Taiwan	5	5	5	5	5
	SV TCL	Singapore	7	6	6	6	7
	Microfriend	Korea	10	7	7	10	10
	Korea Instrument	Korea	9	8	8	7	8
	Cascade Microtech	USA	6	9	-	-	-
	FEINMETALL	Germany	11	10	11	12	11
					14		

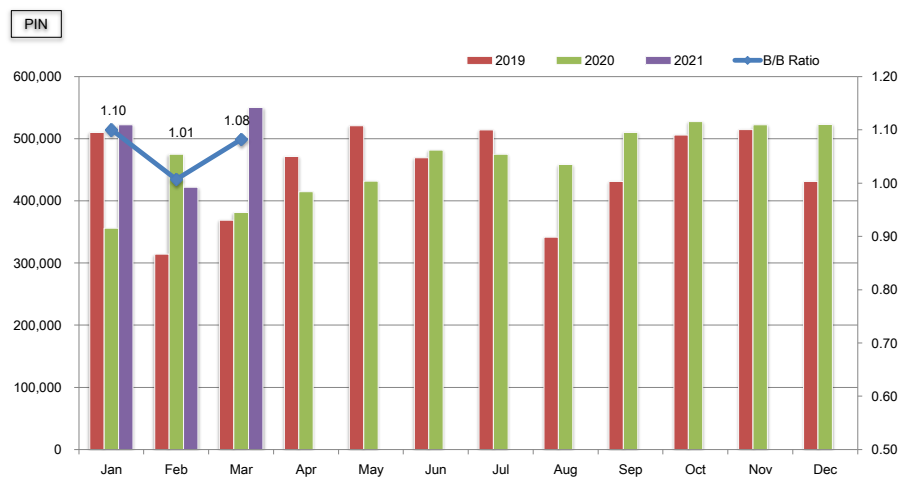
# CPC & VPC



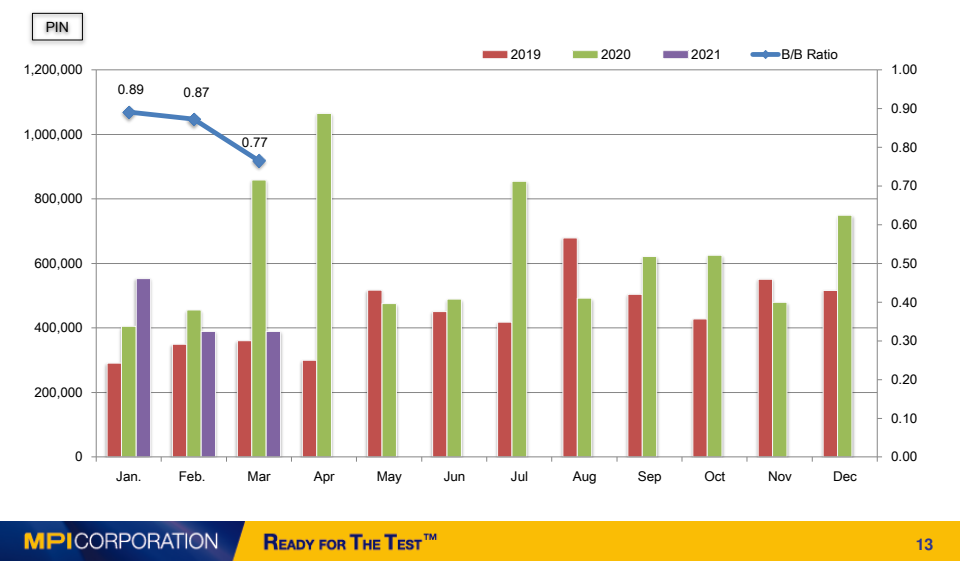
## Product Mix of CPC (Cantilever)



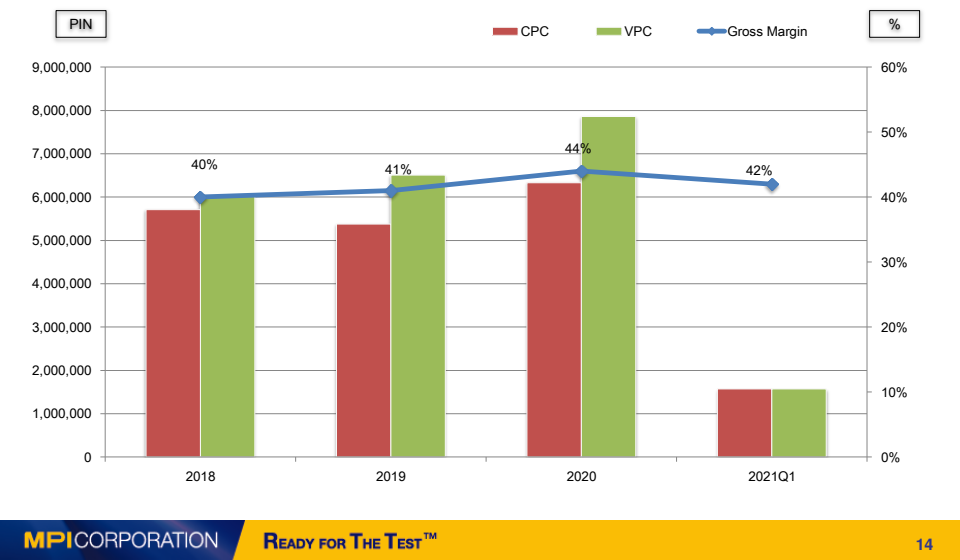
## CPC Pin-Shipment



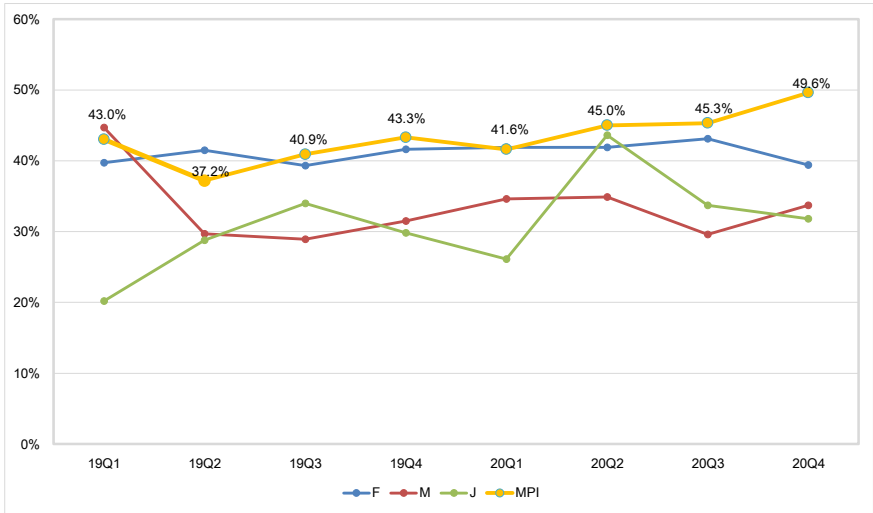
# VPC Pin-Shipment



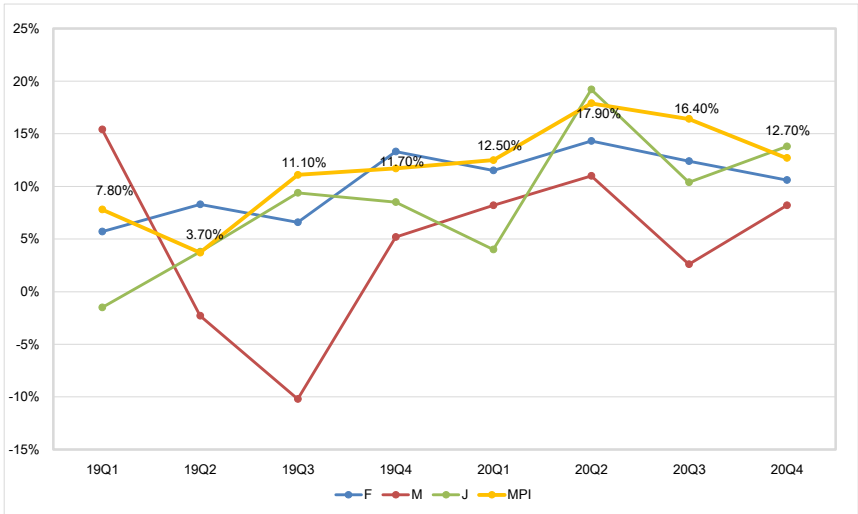
# CPC and VPC Yearly Status



# Gross Margin Between Global Peers



# Operating Margin Between Global Peers



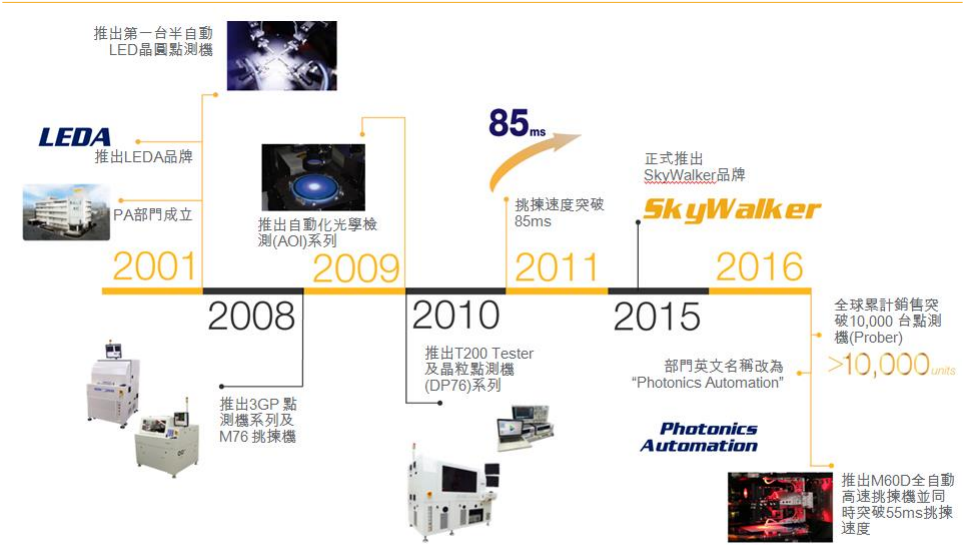


# Photonics Automation (LED)

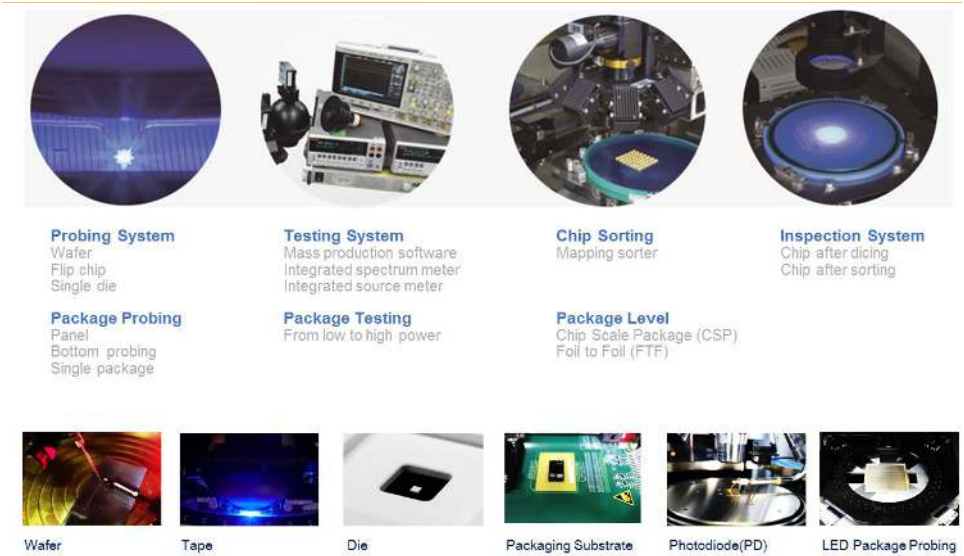
## Photonics Automation (PA) Overview



# Milestone



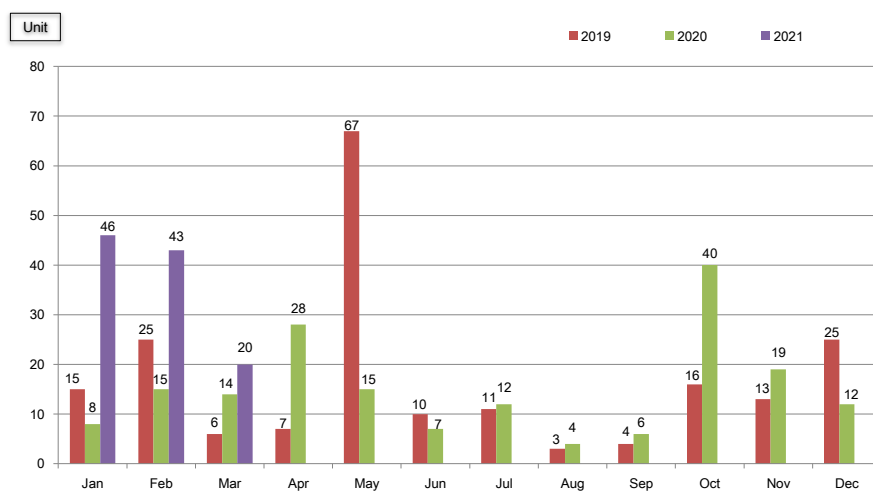
# Main Product Line



## Wafer Technology Migration



## 2021 Shipment



# New Business Unit (Thermal/AST)

## Thermal



- Addressable Market Size: roughly USD\$30m
- Applied Industries: Telecom / Automotive/Industrial, industrial and semi industries

<http://www.mpi-thermal.com/media/>

# MPI Thermal

Hot and Cold Air Flow  
Environmental Temperature Test

-100°C  +300°C

**ThermalAir Series**  
Temperature Testing Systems



Applications & Industry Segments



Semiconductor



Automotive



Aerospace



Telecommunications



Fiber Optic



Electronics



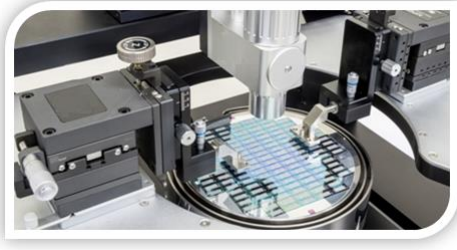
Sensors



Advanced Technology

# AST

- **Market size:** roughly USD\$400m
- **Industry:** Foundry/IC design houses' engineering stage process



# MPI Advanced Semiconductor Test

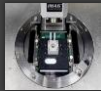
Engineering Probe Systems  
and  
RF Probe Products



Applications & Industry Segments



Device Characterization



High Power



RF & mmW



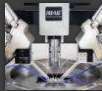
Design Validation



Failure Analysis



Wafer Level Reliability



Silicon Photonics



Laser Cutter

MPI CORPORATION

## Financial Statements

READY FOR THE TEST™

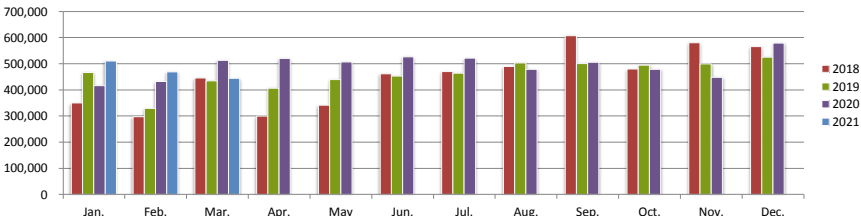
# Balance Sheet Highlight

	2020		2019	
Cash and Cash Equivalents	1,445	16%	1103	14%
Fixed Assets	3,735	42%	3,362	41%
Total Assets	8,976	100%	8,178	100%
LT Debt	763		142	
Shareholders' Equity	5,648	63%	4,379	54%
EBITDA	844		489	
*EBITDA=operating income + depreciation & amortization expenses				

# Income Statement

NT\$1,000	2020		2019	
Net Sales	5,925,601	100%	5,515,200	100%
Cost of Goods Sold	3,340,036	56%	3,286,299	59%
Gross Profit	2,585,565	44%	2,228,901	41%
Operating Expense	1,725,536	29%	1,751,653	32%
Operating Income	860,029	15%	477,248	9%
Investment Income & Others	-15,314		11,783	
Net Income (before tax)	714,221	12%	427,984	8%
EPS	8.41		5.36	

Net Sales NT\$ 1,000





**MPI**CORPORATION



**Thank You**



<http://www.mpi-corporation.com>

**READY FOR THE TEST™**